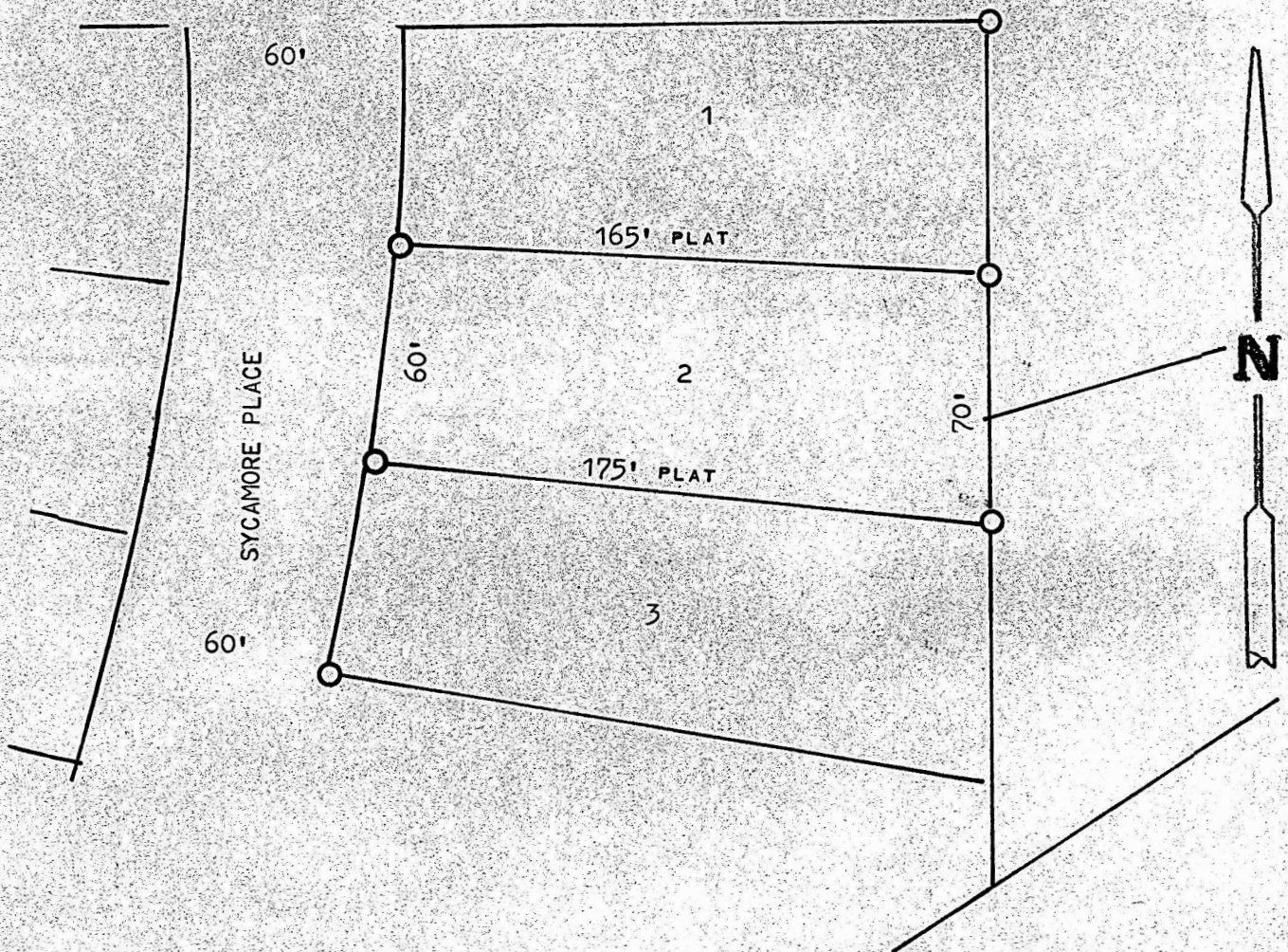


A SURVEY OF LOT 2, Block 1
SYCAMORE PLACE ADDITION
MCPHERSON, KANSAS



○ PINS FOUND OR SET THIS SURVEY

STATE OF KANSAS)
COUNTY OF MCPHERSON) SS

II, FRANCIS RANKIN, PROFESSIONAL ENGINEER OF THE STATE OF KANSAS
DO HEREBY CERTIFY THAT UNDER MY SUPERVISION A SURVEY WAS MADE
OF LOT 2, BLOCK 1, SYCAMORE PLACE TO THE CITY OF MCPHERSON, KANSAS
AND THAT THE ACCOMPANYING PLAT IS A TRUE EXHIBIT OF SAID SURVEY
AS FAR AS IT IS KNOWN TO ME.

SURVEY CALLED FOR BY LINCOLN BECKER

SIGNED THIS 20 DAY OF MARCH, 1972

Francis Rankin
FRANCIS RANKIN
PROFESSIONAL ENGINEER
MCPHERSON, KANSAS

