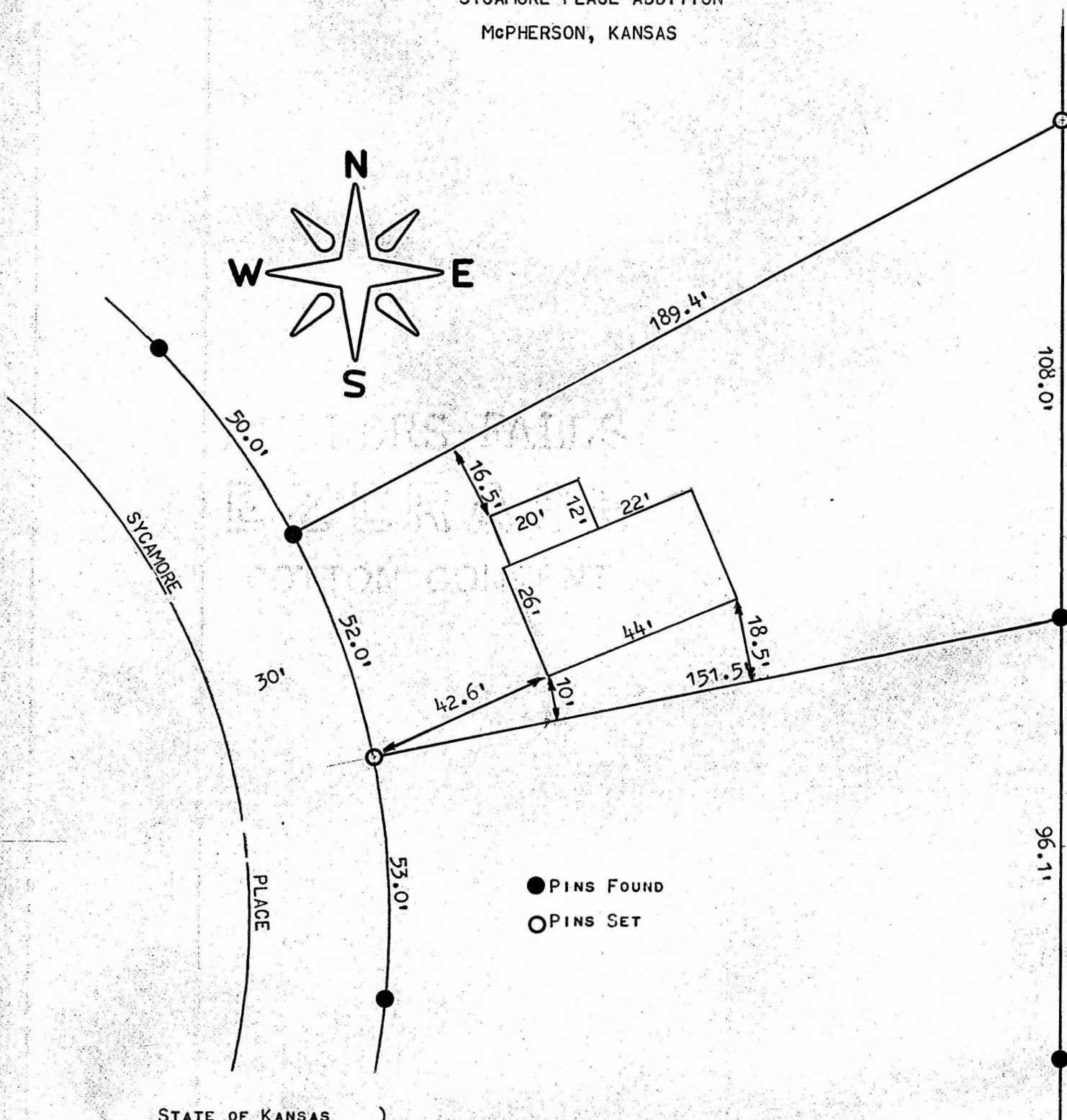


A SURVEY OF LOT 33, BLOCK 3
SYCAMORE PLACE ADDITION
McPHERSON, KANSAS



STATE OF KANSAS)
COUNTY OF McPHERSON) SS

I, F. R. RANKIN, COUNTY ENGINEER OF McPHERSON CO., KANSAS, DO HEREBY CERTIFY THAT UNDER MY SUPERVISION A SURVEY WAS MADE OF LOT 33, BLOCK 3, IN SYCAMORE PLACE ADDITION TO THE CITY OF McPHERSON, KANSAS, AND THE ABOVE PLAT IS A TRUE EXHIBIT OF SAID SURVEY AS FAR AS IT IS KNOWN TO ME.

SURVEY CALLED FOR BY DUGUID INVESTMENT CO.

SIGNED ON THIS 1 DAY OF MAY, 1973.

F. R. Rankin
F. R. RANKIN
COUNTY ENGINEER
McPHERSON CO., KANSAS

