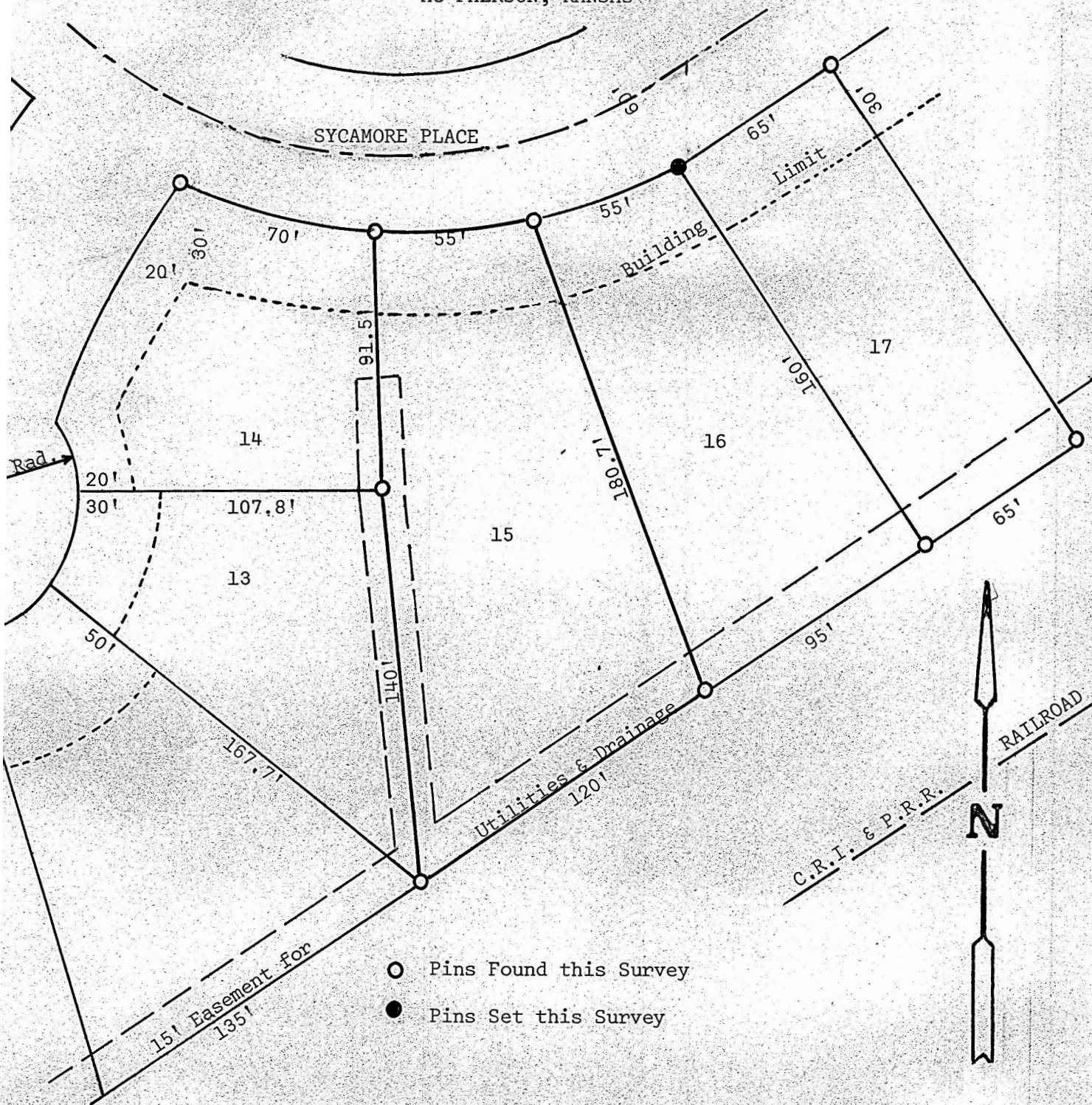


A SURVEY OF LOT 15, BLOCK 3,
SYCAMORE PLACE ADDITION
MC PHERSON, KANSAS



STATE OF KANSAS)
COUNTY OF MC PHERSON) SS

I, Melvin Ferguson, County Engineer of McPherson County, Kansas, do hereby certify that under my supervision a survey was made of Lot 15, Block 3, Sycamore Place Addition to the City of McPherson, Kansas, and that the above plat is a true exhibit of said survey as far as it is known to me.

Survey called for by Fred E. Landis

Signed this 16th day of January, 1975

Melvin Ferguson
Melvin Ferguson, P.
County Engineer
McPherson County, Kansas

MELVIN V. FERGUSON
LICENSED
6772
KANSAS
PROFESSIONAL ENGINEER