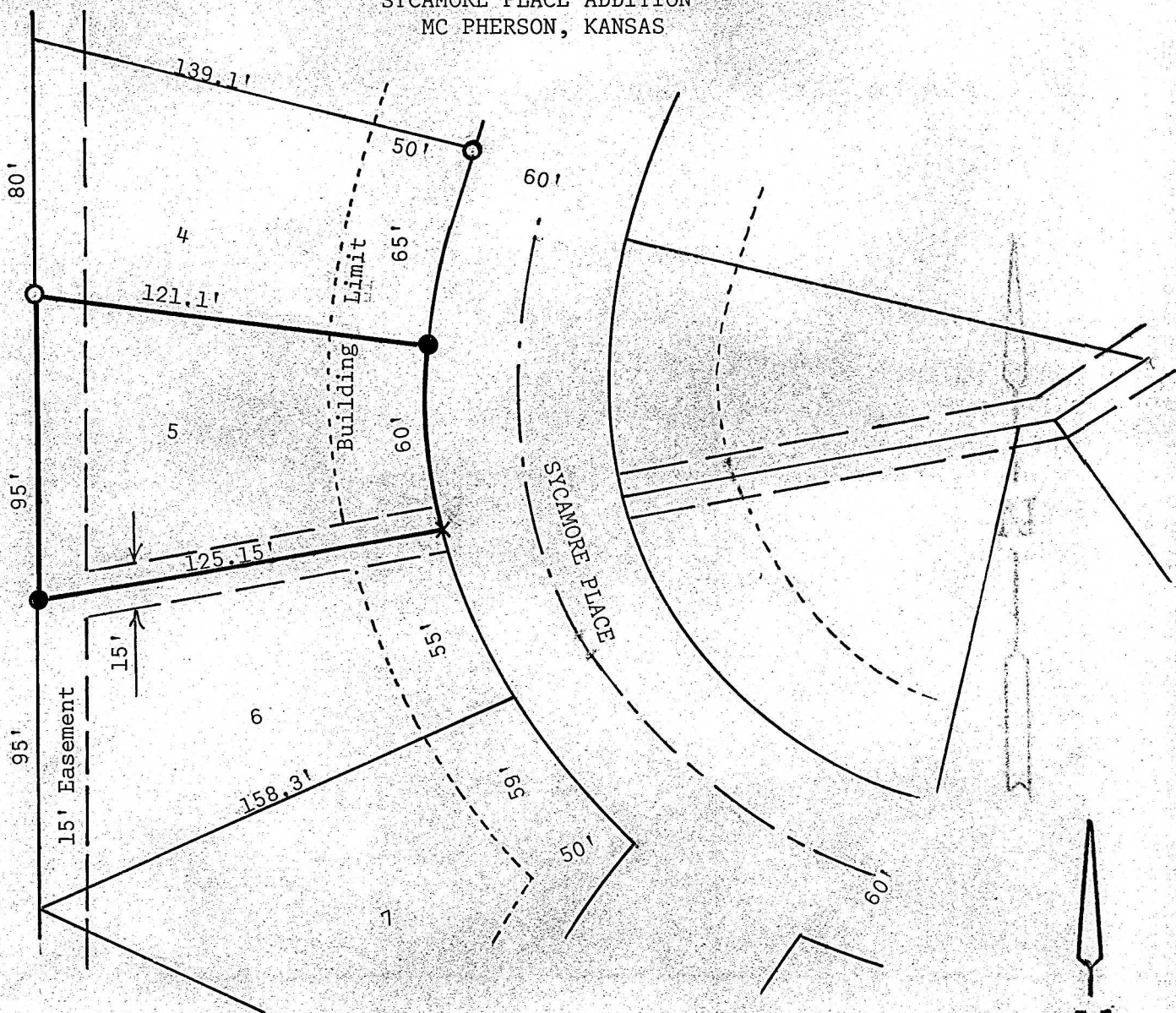


A SURVEY OF LOT 5, BLOCK 3  
SYCAMORE PLACE ADDITION  
MC PHERSON, KANSAS



- Pins Found this Survey
- Pins Set this Survey
- ✕ X in Concrete Found

STATE OF KANSAS )  
COUNTY OF MC PHERSON) SS

I, Melvin Ferguson, County Engineer of McPherson County, Kansas do hereby certify that under my supervision a survey was made of Lot 5, Block 3, Sycamore Place Addition to the City of McPherson, Kansas, and that the above plat is a true exhibit of said survey as far as it is known to me.

Survey called for by Fred E. Landis

Signed this 16<sup>th</sup> day of January, 1975

*Melvin Ferguson*  
Melvin Ferguson, P. E.  
County Engineer  
McPherson County, Kansas

