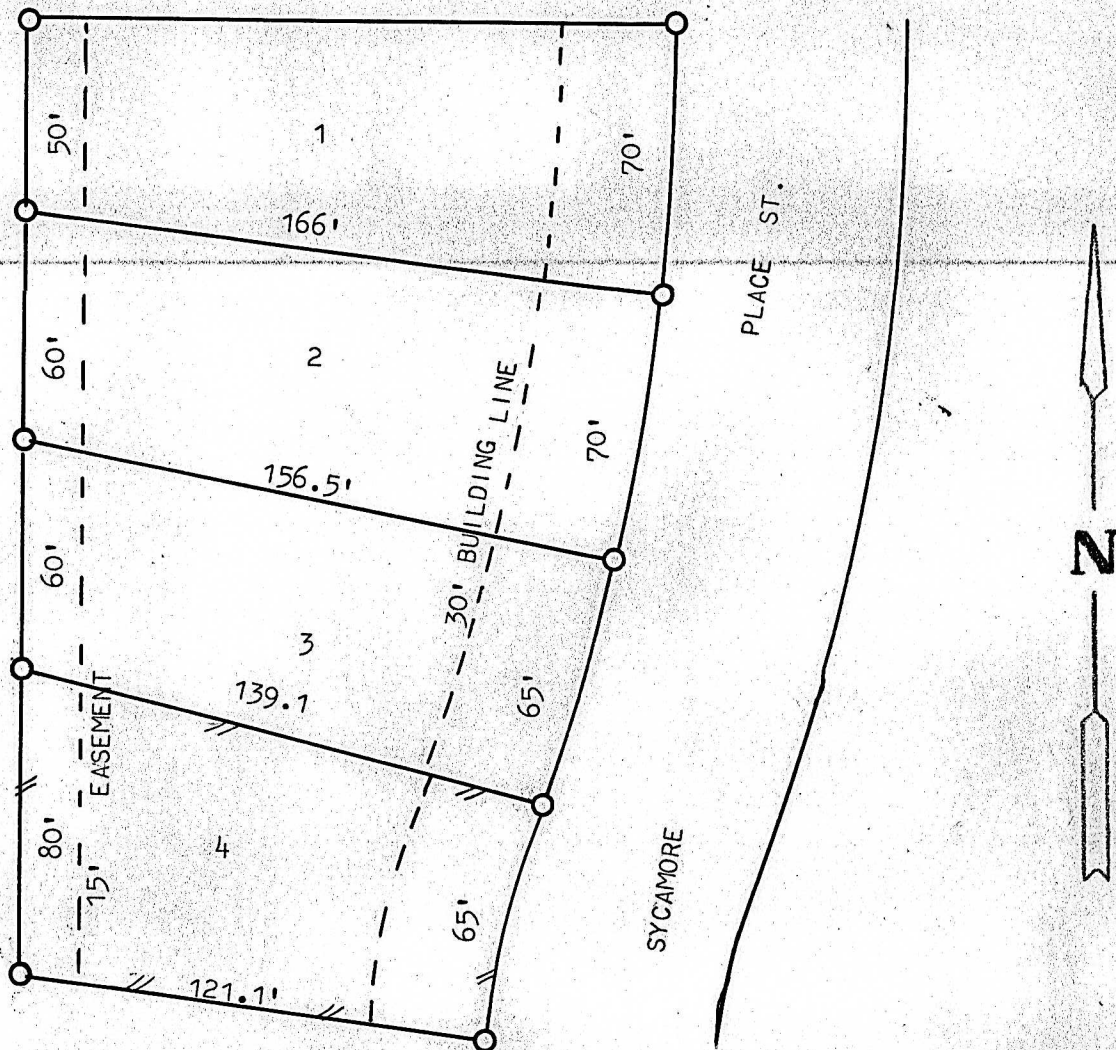


MCPHERSON, KANSAS



STATE OF KANSAS)
COUNTY OF MCPHERSON) SS

SURVEY CALLED FOR BY LINCOLN BECKER

SIGNED THIS 20 DAY OF MARCH, 1969

FRANCIS RANKIN
PROFESSIONAL ENGINEER
MC PHERSON, KANSAS

