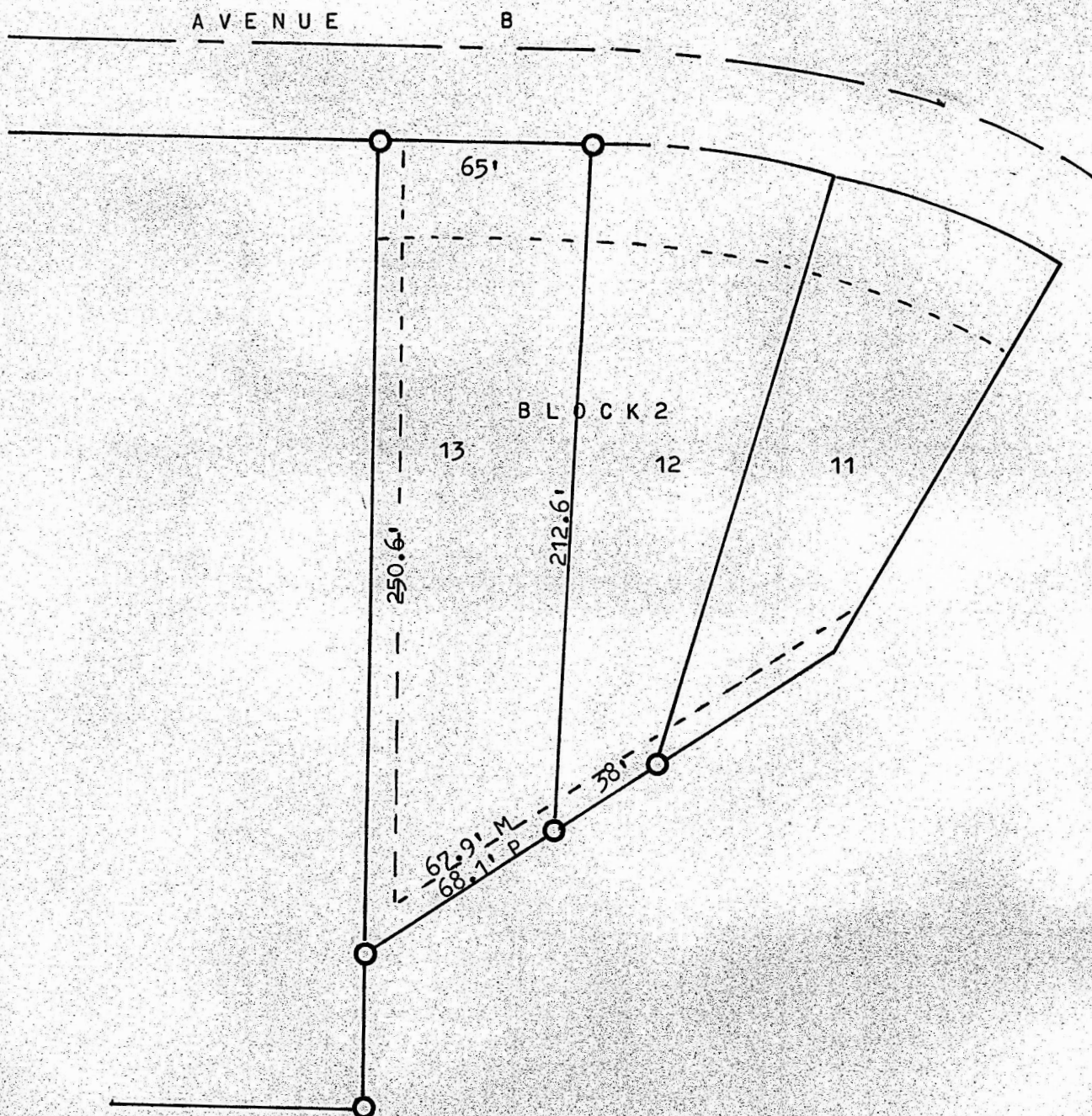


A SURVEY OF LOT 13, BLOCK 2, SYCAMORE PLACE
MCPHERSON, KANSAS



○ PINS FOUND OR SET THIS SURVEY

STATE OF KANSAS)
COUNTY OF MCPHERSON) SS

I, FRANCIS RANKIN, PROFESSIONAL ENGINEER OF THE STATE OF KANSAS DO
HEREBY CERTIFY THAT UNDER MY SUPERVISION A SURVEY WAS MADE OF LOT 13,
BLOCK 2, SYCAMORE PLACE TO THE CITY OF MCPHERSON, KANSAS AND THAT THE
ACCOMPANYING PLAT IS A TRUE EXHIBIT OF SAID SURVEY AS FAR AS IT IS
KNOWN TO ME.

SURVEY CALLED FOR BY HARRIS DEV.

SIGNED THIS 27th DAY OF JANUARY, 1970

Francis Rankin
FRANCIS RANKIN
PROFESSIONAL ENGINEER
MCPHERSON, KANSAS

