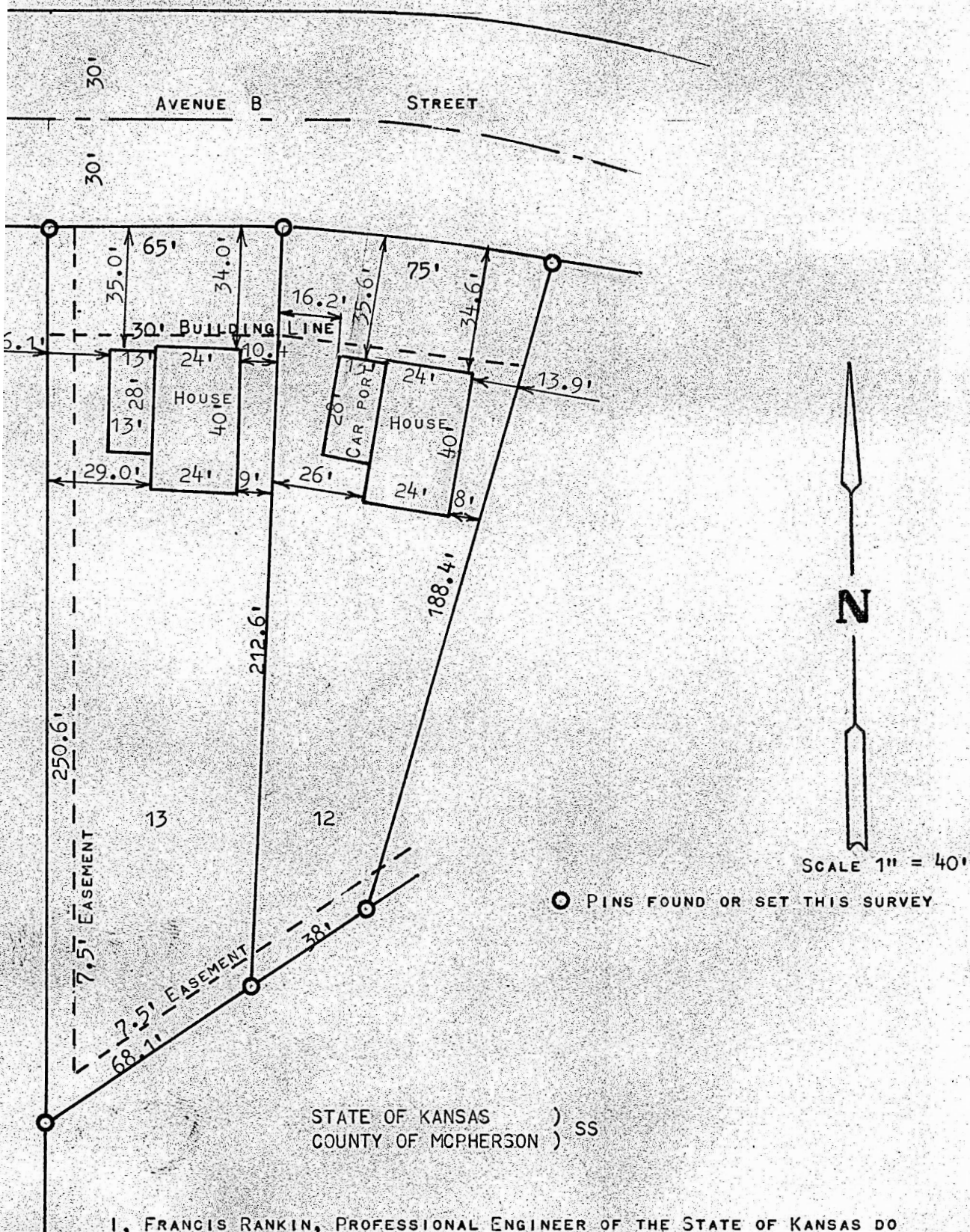


A SURVEY OF LOTS 12 & 13, BLOCK 2, SYCAMORE PLACE

MCPHERSON, KANSAS



I, FRANCIS RANKIN, PROFESSIONAL ENGINEER OF THE STATE OF KANSAS DO
HEREBY CERTIFY THAT UNDER MY SUPERVISION A SURVEY WAS MADE OF LOTS 12 & 13,
SYCAMORE PLACE, TO THE CITY OF MCPHERSON, KANSAS AND THAT THE ACCOMPANYING
MAP IS A TRUE EXHIBIT OF SAID SURVEY AS FAR AS IT IS KNOWN TO ME.

SURVEY CALLED FOR BY W.G. DUGUID

HOUSE MEASURED ON LOT, OCTOBER 31, 1970

SIGNED THIS 14 DAY OF SEPTEMBER, 1970

FRANCIS RANKIN
PROFESSIONAL ENGINEER
MCPHERSON, KANSAS

