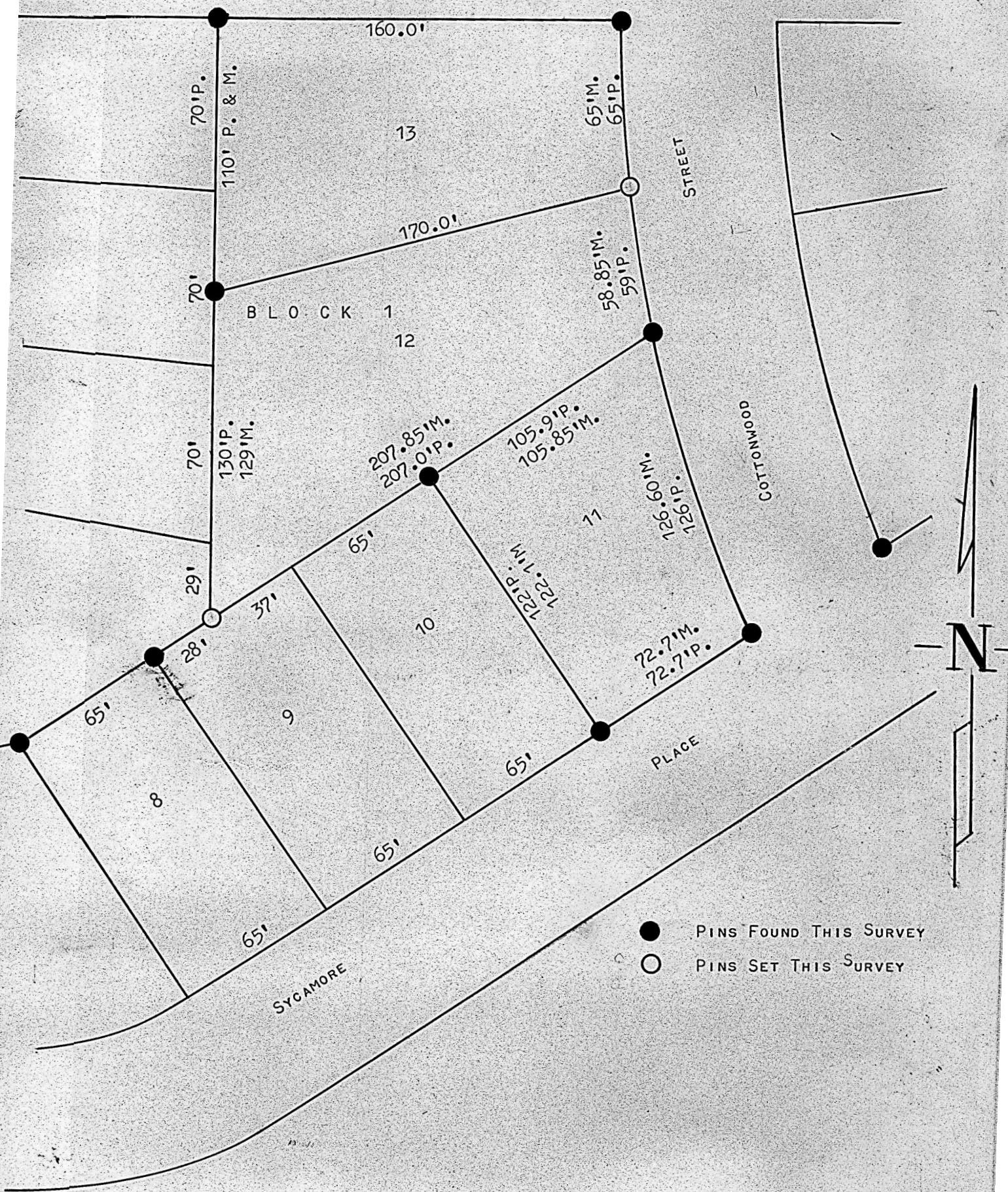
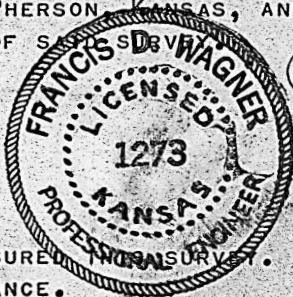


A SURVEY OF LOTS 11, 12 & 13
BLOCK 1 SYCAMORE PLACE
MCIPHERSON, KANSAS



STATE OF KANSAS)
COUNTY OF McPHERSON) SS

I, FRANCIS D. WAGNER, COUNTY ENGINEER OF McPHERSON COUNTY, KANSAS, DO HEREBY CERTIFY THAT I DID CAUSE TO BE DONE ON THE 13TH DAY OF APRIL, 1961, A SURVEY OF LOTS 11, 12, AND 13 OF BLOCK 1 SYCAMORE PLACE TO THE CITY OF McPHERSON, KANSAS, AND THAT THE ACCOMPANYING PLAT IS A TRUE EXHIBIT OF SAID SURVEY.



Francis D. Wagner

FRANCIS D. WAGNER
COUNTY ENGINEER
McPHERSON COUNTY

APRIL 17, 1961

NOTE: M = DISTANCE MEASURED
P = PLATTED DISTANCE.