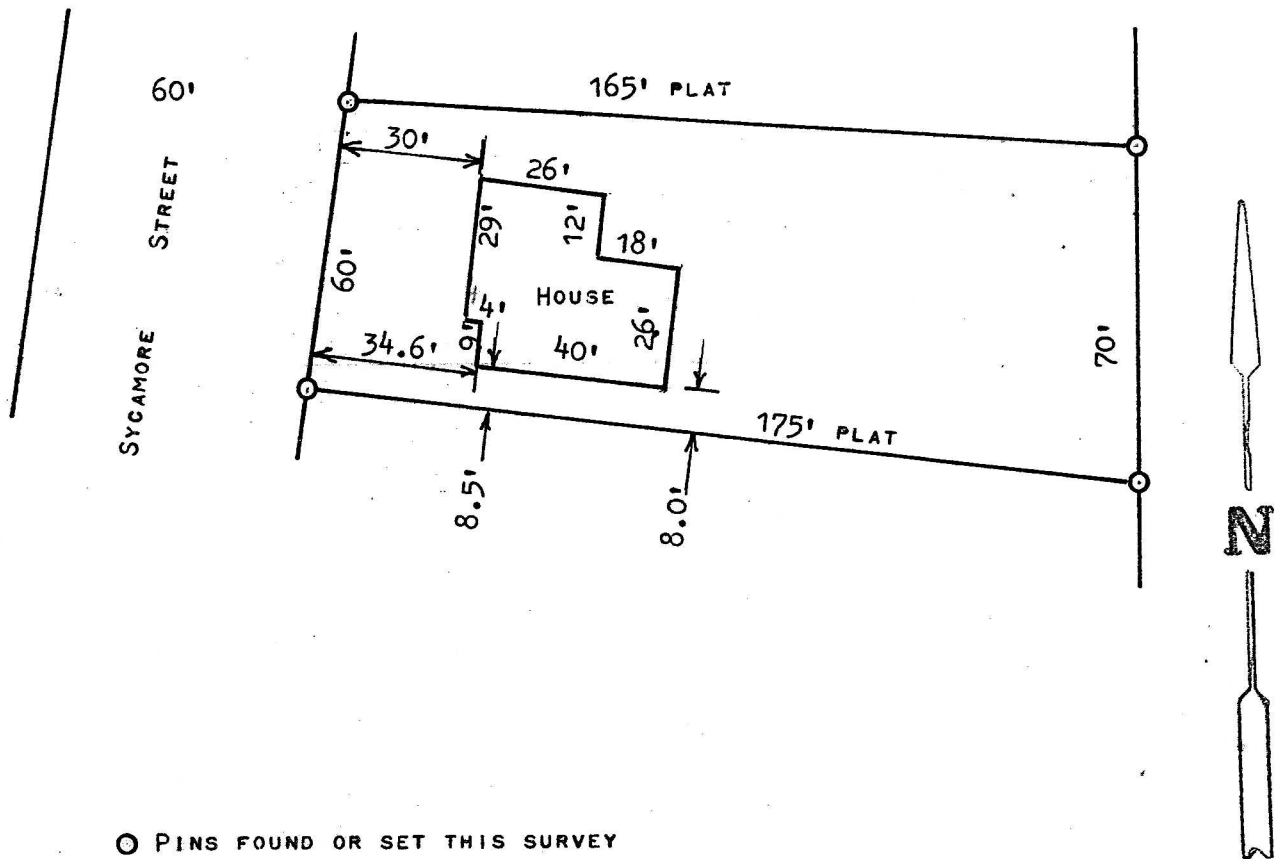


A SURVEY OF LOT 2, BLOCK 1
 SYCAMORE PLACE ADDITION
 MCPHERSON, KANSAS



○ PINS FOUND OR SET THIS SURVEY

STATE OF KANSAS)
 COUNTY OF MCPHERSON) SS

I, FRANCIS RANKIN, PROFESSIONAL ENGINEER OF THE STATE OF KANSAS DO HEREBY CERTIFY THAT UNDER MY SUPERVISION A SURVEY WAS MADE OF LOT 2, BLOCK 1, SYCAMORE PLACE, TO THE CITY OF MCPHERSON, KANSAS, AND THAT THE ACCOMPANYING PLAT IS A TRUE EXHIBIT OF SAID SURVEY AS FAR AS IT IS KNOWN TO ME.

SURVEY CALLED FOR BY LINCOLN BECKER

SIGNED THIS 10 DAY OF MAY, 1972

Francis Rankin
 FRANCIS RANKIN
 PROFESSIONAL ENGINEER
 MCPHERSON, KANSAS

