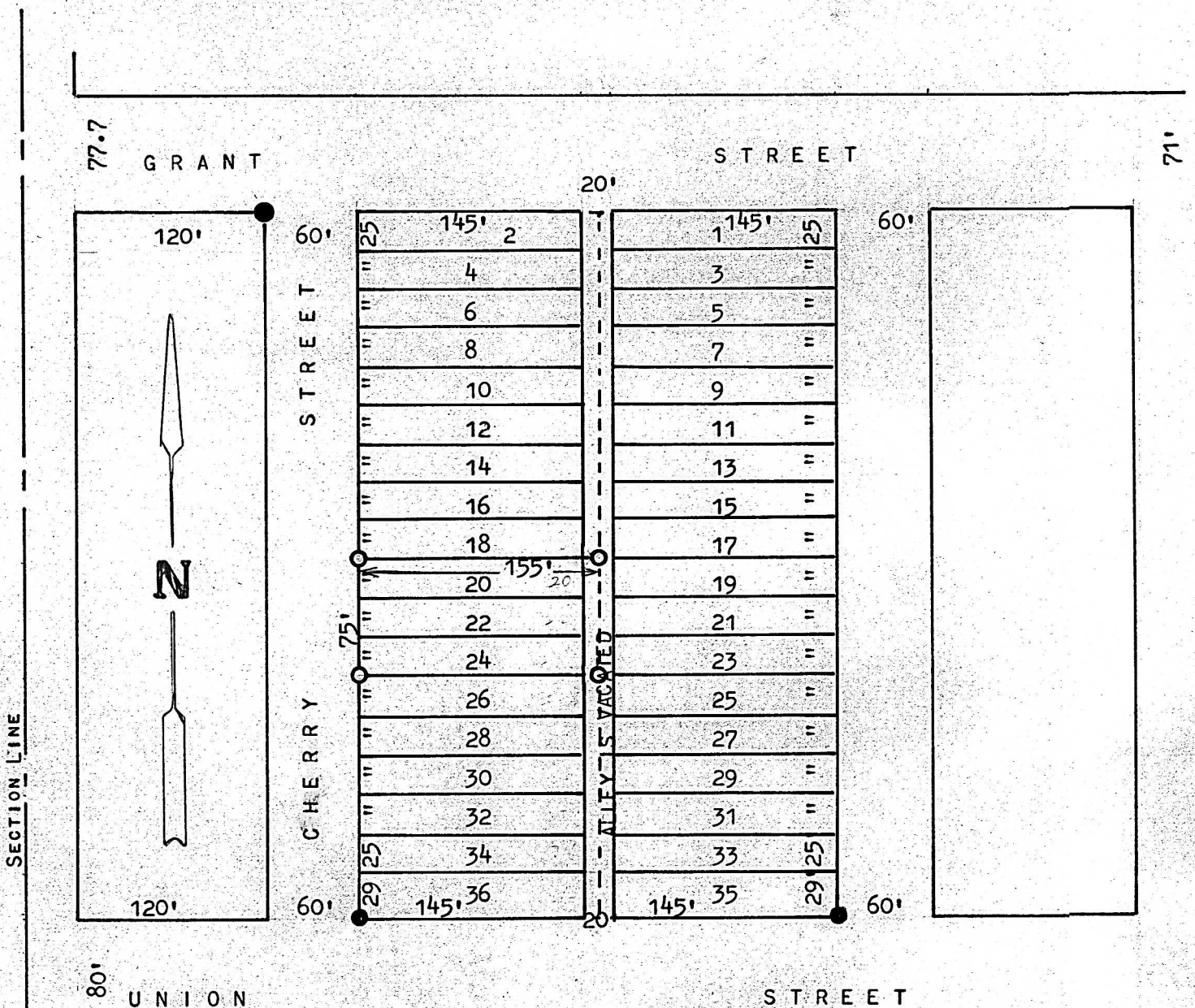


A SURVEY OF LOTS 20, 22, AND 24 SOUTH PARK
ADDITION; CHERRY STREET, LINDSBORG, KANSAS



- PINS FOUND THIS SURVEY
- PINS SET THIS SURVEY

STATE OF KANSAS)
COUNTY OF MCPHERSON) SS

I, FRANCIS RANKIN, COUNTY ENGINEER OF MCPHERSON COUNTY, KANSAS DO HEREBY CERTIFY THAT UNDER MY SUPERVISION A SURVEY WAS MADE OF LOTS 20, 22 AND 24, SOUTH PARK ADDITION, CHERRY STREET, AND THE WEST HALF OF ALLEY BY VACATION, TO THE CITY OF LINDSBORG, KANSAS AND THAT THE ACCOMPANYING PLAT IS A TRUE EXHIBIT OF SAID SURVEY AS FAR AS IT IS KNOWN TO ME.

SURVEY CALLED FOR BY LELAND OLSON

SIGNED THIS 13TH DAY OF SEPTEMBER, 1973

FRANCIS RANKIN
COUNTY ENGINEER
MCPHERSON, COUNTY,

