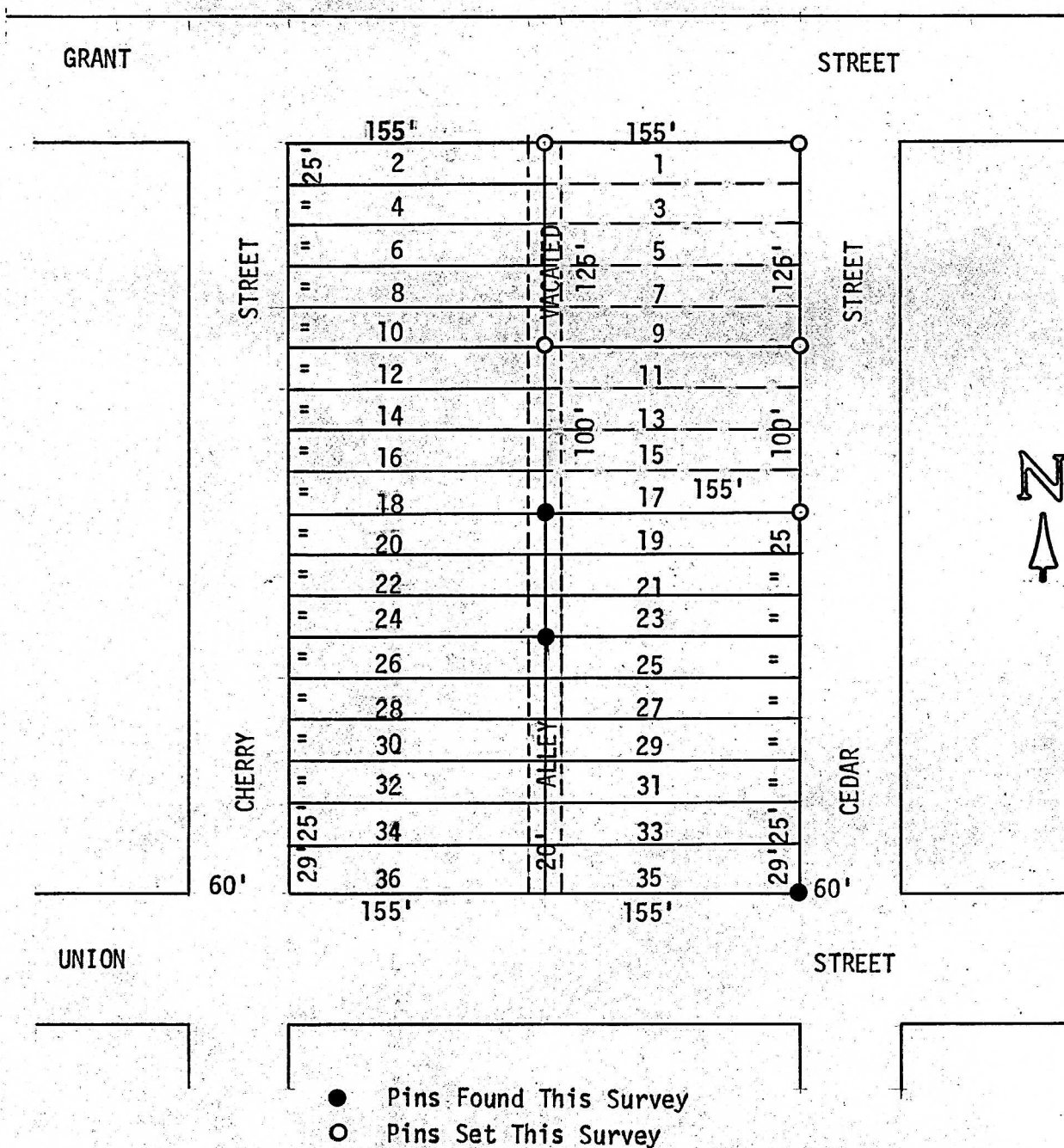


A SURVEY OF LOTS 1, 3, 5, 7, 9, 11, 13, 15 & 17
SOUTH PARK ADDITION, CEDAR STREET
LINDSBORG, KANSAS



State of Kansas)
County of McPherson) SS

I, F. R. Rankin, County Engineer of McPherson County, Kansas, do hereby certify that under my supervision a survey was made of Lots 1, 3, 5, 7, 9, 11, 13, 15, & 17, South Park Addition, Cedar Street, and the East 1/2 of the alley by vacation to the City of Lindsborg, Kansas. The above plat is a true exhibit of said survey as far as it is known to me.

Survey called for by Colonial Savings & Loan

Signed on this 24 day of September, 1973

F. R. Rankin P.E.
F. R. Rankin, P. E.
Administrator of P.W. & County Engr.
McPherson County, Kansas

