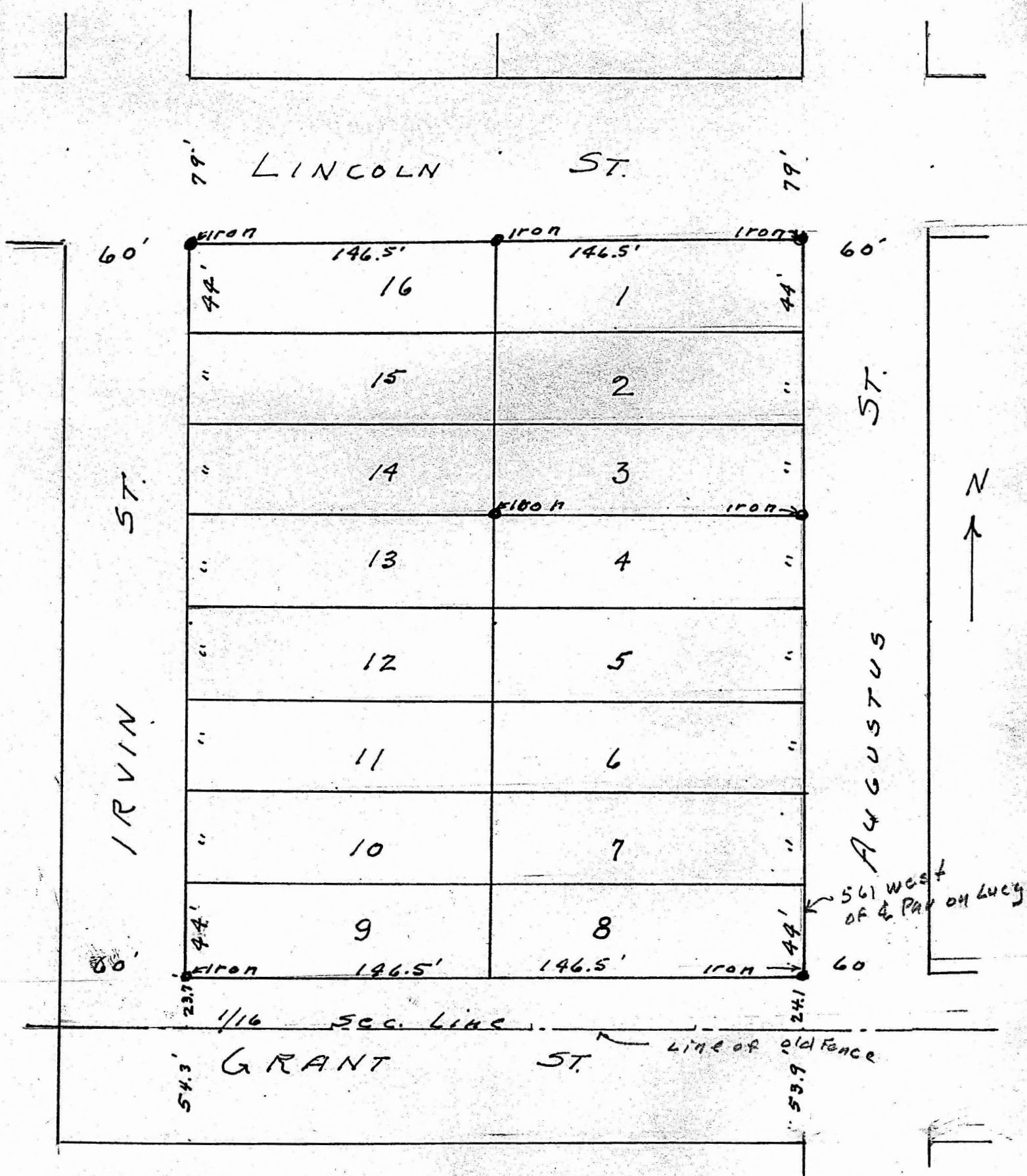


BLOCK 8 SIMPSON'S ADDITION, MCPHERSON, KANSAS.

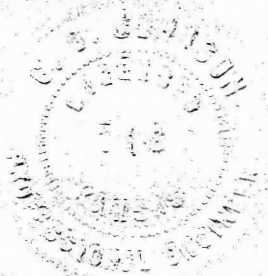


State of Kansas, County of McPherson, ss.

I, G.D. Johnson, Licensed Civil Engineer of the State of Kansas, do hereby certify that I did on the 26th. day of July, 1954 survey Block 8. Simpson's Addition to the City of McPherson, Kansas.

I also certify that the accompanying plat is a true exhibit of said survey.

G. D. Johnson



MICROFILM