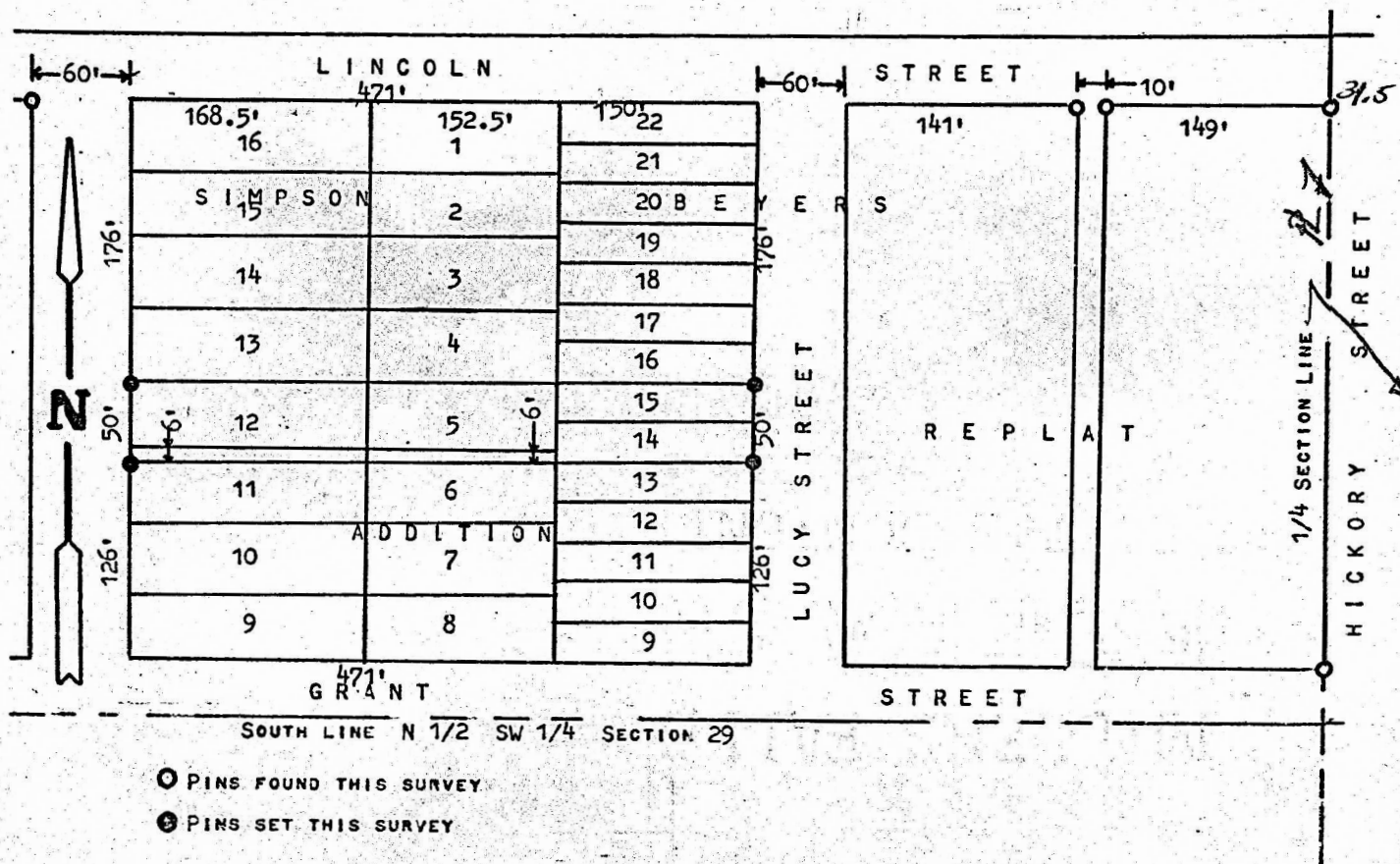


A SURVEY OF LOTS 5, 12, AND THE NORTH 6'
OF 6 AND 11, BLOCK 7 OF SIMPSON ADDITION,
AND LOTS 14 AND 15, BLOCK 1 OF BEYERS
REPLAT TO THE CITY OF MCPHERSON, KANSAS



STATE OF KANSAS)
COUNTY OF MCPHERSON) SS

I, FRANCIS RANKIN, COUNTY ENGINEER OF MCPHERSON COUNTY, KANSAS DO HEREBY
CERTIFY THAT UNDER MY SUPERVISION A SURVEY WAS MADE OF LOTS 5, 12, AND THE NORTH
6 FEET OF 6 AND 11, BLOCK 7 OF SIMPSON'S ADDITION, AND LOTS 14 AND 15, BLOCK 1
OF BEYERS REPLAT TO THE CITY OF MCPHERSON, KANSAS. I ALSO CERTIFY THAT THE ABOVE PLAT IS
PLAT IS A TRUE EXHIBIT OF SAID SURVEY AS FAR AS IT IS KNOWN TO ME.

SURVEY CALLED FOR BY WYLIE SUMMERLIN

SIGNED THIS 5 DAY OF JUNE, 1973

Francis Rankin
FRANCIS RANKIN
COUNTY ENGINEER
MCPHERSON COUNTY, KANSAS

