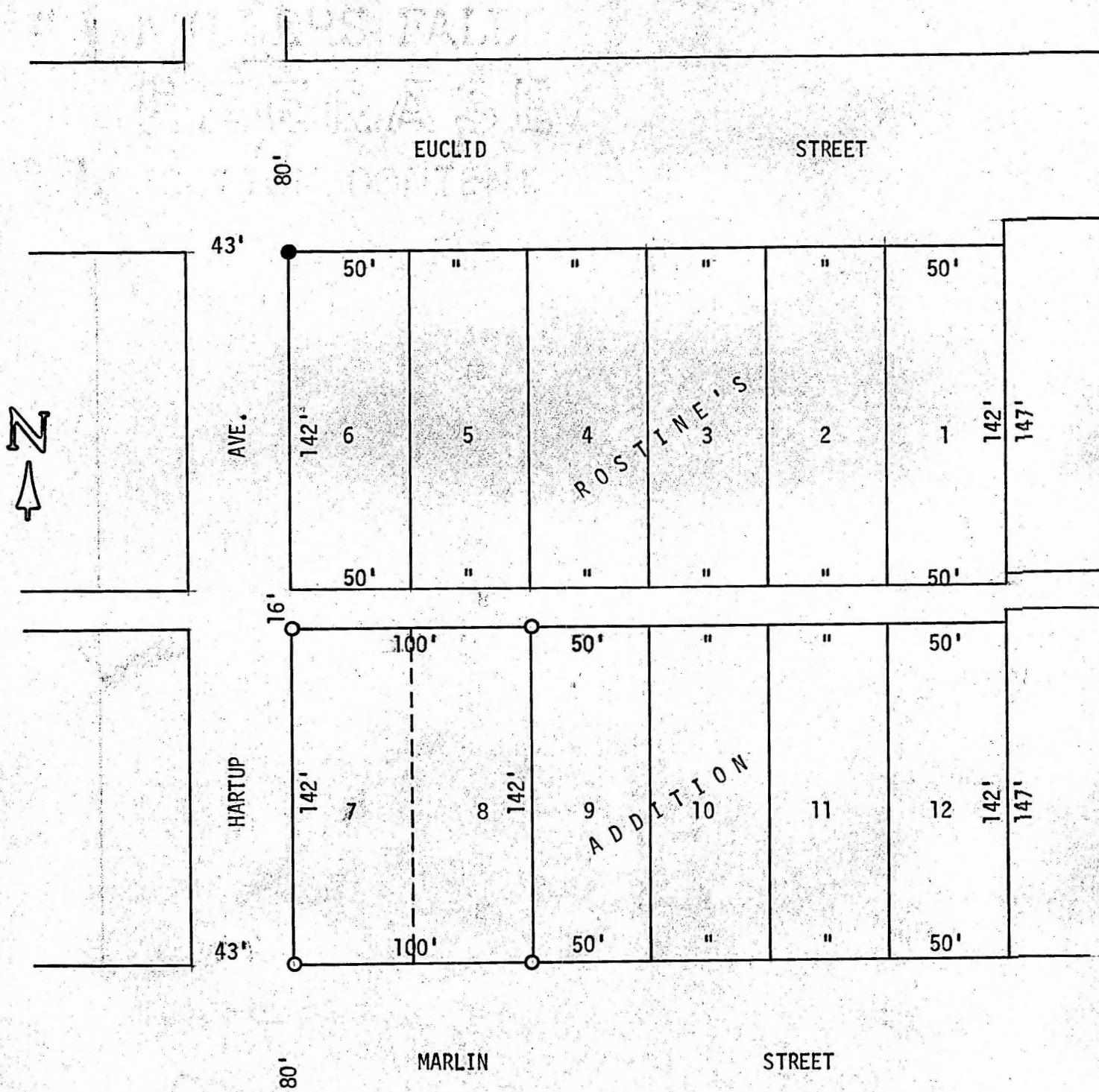


A SURVEY OF LOTS 7 & 8  
ROSTINE'S ADDITION  
MC PHERSON, KANSAS



State of Kansas )  
County of McPherson ) SS

I, F. R. Rankin, County Engineer of McPherson County, Kansas, do hereby certify that under my supervision a survey was made of Lots 7 and 8 in Rostine's Addition to the City of McPherson, Kansas and the above plat is a true exhibit of said survey as far as it is known to me.

Survey called for by George Shields

Signed this 30 day of September, 1973

*F. R. Rankin*  
F. R. Rankin, P. E.  
Administrator of P. W. & County Engineer  
McPherson County, Kansas

