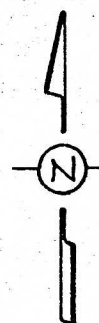
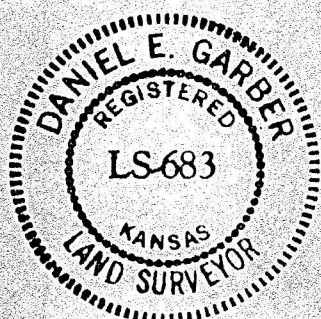
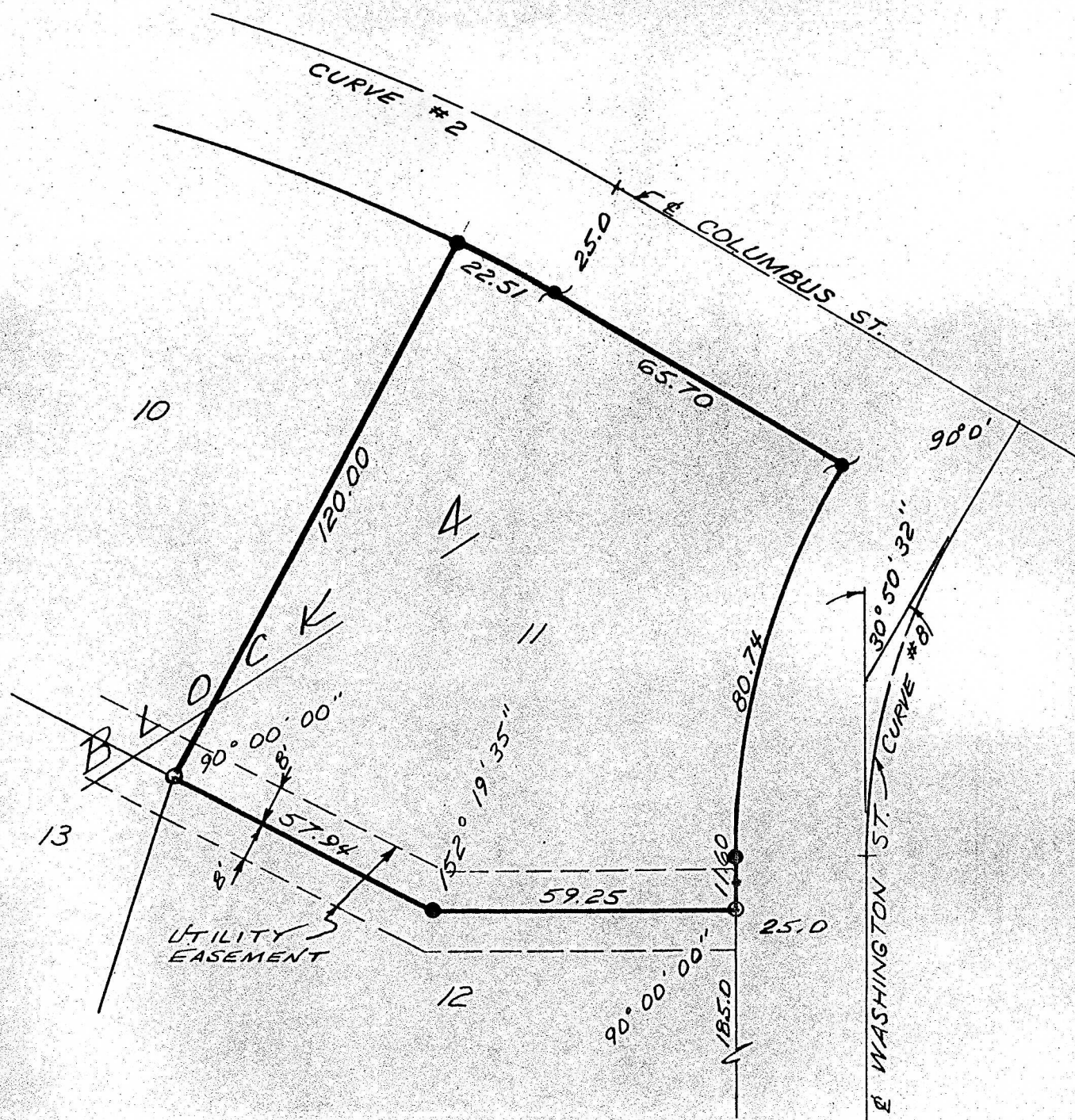


Survey For: Alden Shields
 By: Garber Surveying Service
 217 E. First Ave., Suite 9
 Hutchinson, Kansas 67501
 DESCRIPTION: Lot 11, Block 4, Rolander-Shields
 2nd Addition to the City of Lindsborg, Kansas.



CENTERLINE CURVE DATA

CURVE #2	CURVE #8	SCALE: 1"=30'
$\Delta = 29^{\circ}54'58''$	$\Delta = 30^{\circ}50'32''$	o Iron Bar Found
R = 432.00'	R = 125.00'	● Iron Bar Set
L = 225.56'	L = 67.29'	o Nail Found
T = 115.42'	T = 34.48'	● Nail Set



I hereby certify this plat to be a true, correct, and complete representation of the property described above, as surveyed by me, this 28th day of August, 1979.

Daniel E. Garber

MICROFILM