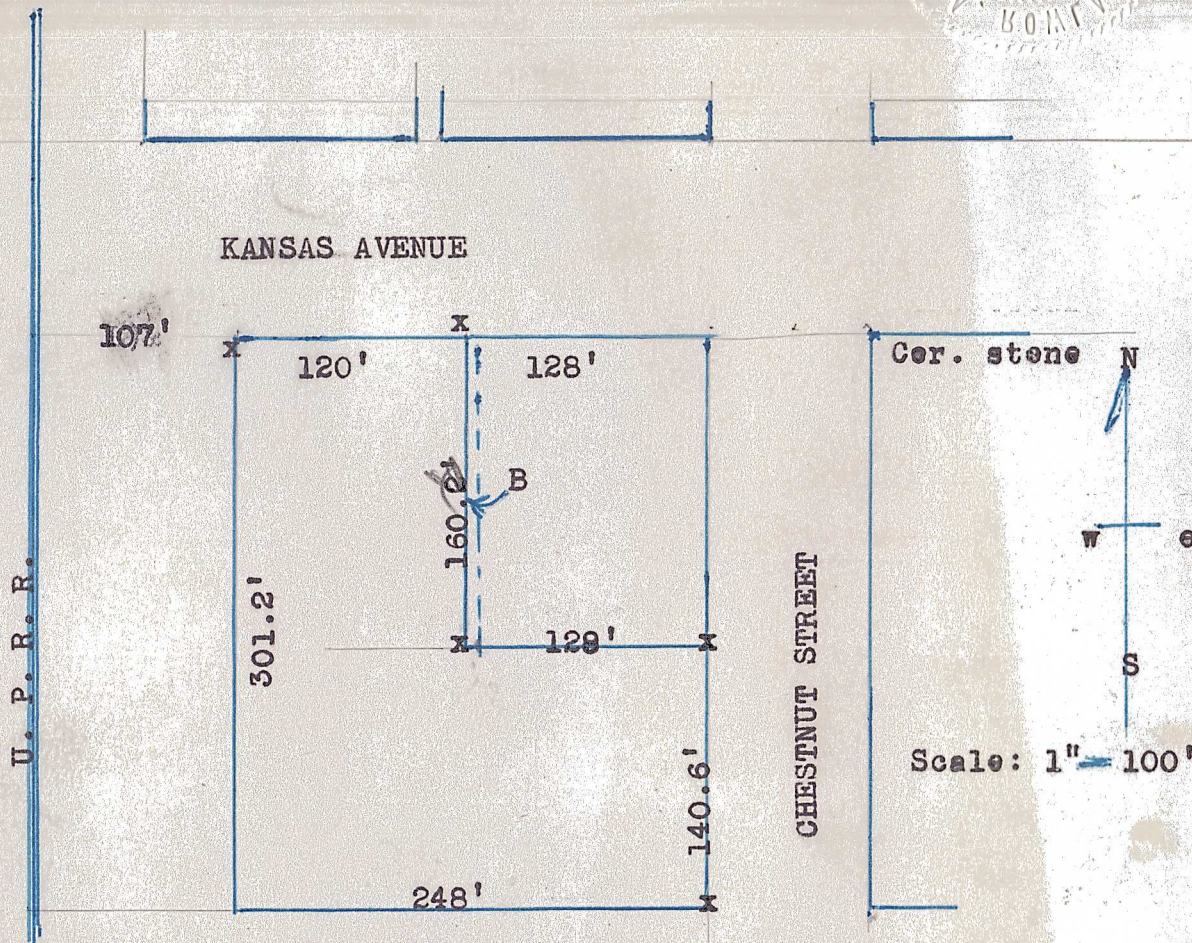


Member

National Society Professional Engineers
Kansas Society Professional Engineers
Kansas Engineering Society

PHONE 796 X

McPHERSON, KANSAS



STATE OF KANSAS, McPherson, County, ss.,

THIS IS TO CERTIFY THAT, I have made a survey of the tract as shown on the above plat and it is in accordance therewith. Beginning at the Northwest corner of Block 1 in Railroad Addition to the City of McPherson, Kansas; then South 301.2 feet; then East 248 feet; then North 140.6 feet; then West 128 feet; then North 160.6 feet; then West 120 feet to the place of beginning. The said tract consists of the South 40 feet of Lot 4 and Lots 5 and 6 in Block 82 of the Original Town of McPherson, Kansas, and all of Block 1 of the said Railroad Addition except a strip of land 6 feet wide and 160.6 feet long being parts of lots 5 and 6 in said Block 1 and being indicated by a letter B on the plat.

At the points marked by an x iron pins were set to denote the location of the corners.

McPherson, Kansas, Aug. 27th 1950.

Signed: Har Rowland
Registered Professional Engineer.