

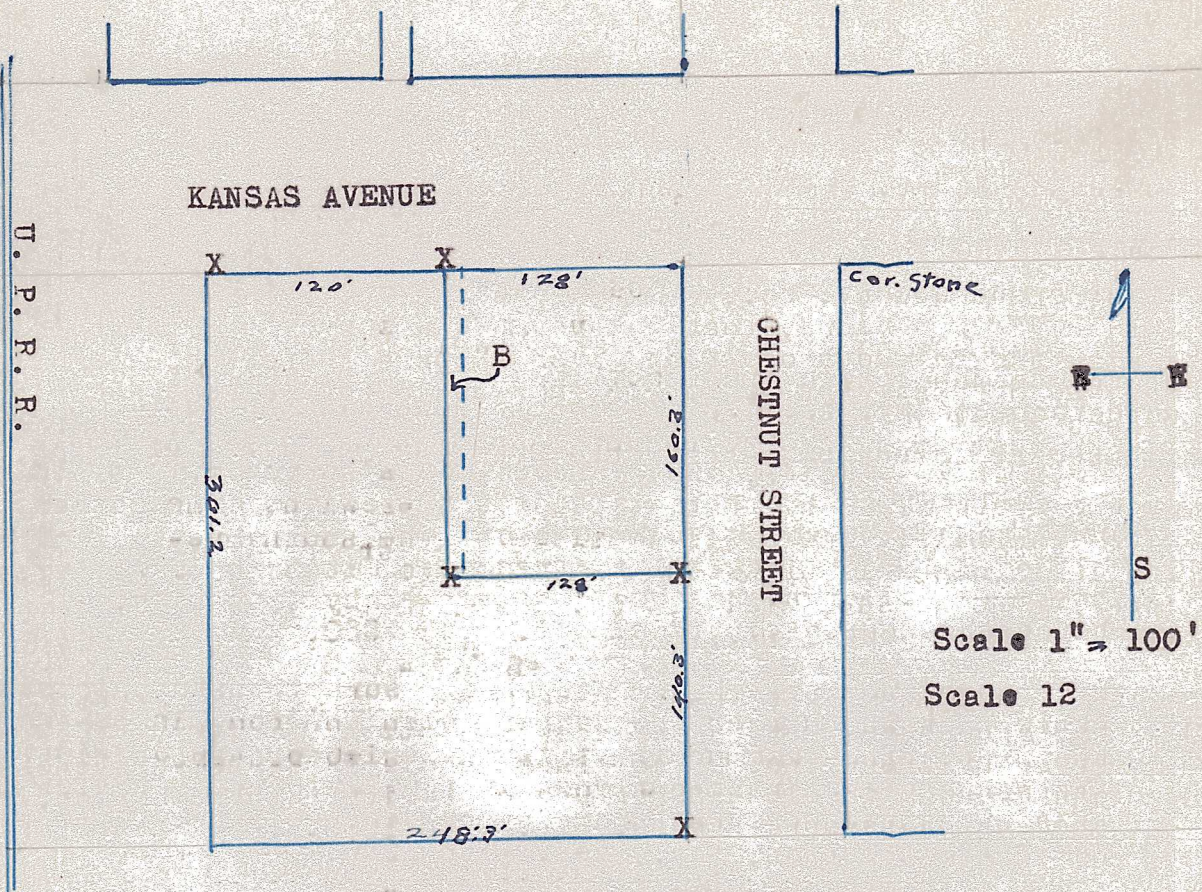
Block 1
Railroad Add.
H. A. ROWLAND • Kansas Licensed Civil Engineer

Member

National Society Professional Engineers
Kansas Society Professional Engineers
Kansas Engineering Society

PHONE 796 X

McPHERSON, KANSAS



THIS is to certify, that, the above plat is in accordance with a survey made by of a tract described as follows: Beginning at the Northwest corner of Block 1 of Railroad Addition to McPherson; Kansas; thence south 301.2 feet to the southwest corner of said Block 1; thence east 248.3 feet to the Southeast corner of Block 82 of the Original town of McPherson, Kansas; thence ~~north~~ north 140.6 feet; thence west 128 feet; thence north 160.6 feet; thence west 120 feet to the place of beginning. The said tract consists of the south 40 feet of lot 4 in said block 82 and all of block 1 in said Railroad Addition except a tract 160.6 feet long and 6 feet wide marked as B in the above plat. At the corners designated with an x iron pins were set to mark the corners.

Dated at McPherson, Kansas, Aug. 26th 1950.

Signed:- _____

Registered Professional Engineer.