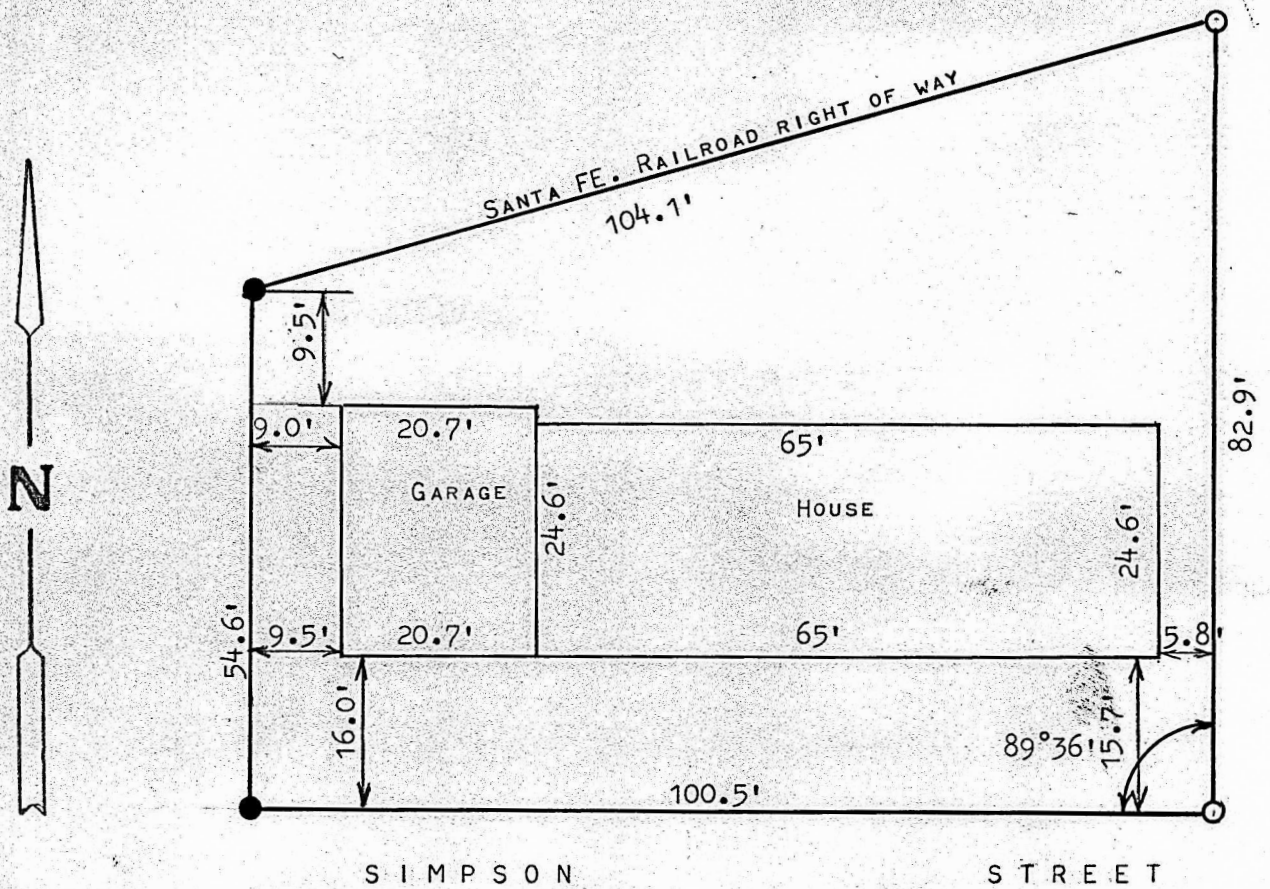


A SURVEY OF LOT 10, EXCEPT THE WEST 187'
 PYLE SUB DIVISION, MCPHERSON, KANSAS



- PINS FOUND THIS SURVEY
- PINS SET THIS SURVEY

STATE OF KANSAS)
 COUNTY OF MCPHERSON) SS

I, FRANCIS RANKIN, PROFESSIONAL ENGINEER OF THE STATE OF KANSAS
 DO HEREBY CERTIFY THAT UNDER MY SUPERVISION A SURVEY WAS MADE
 OF LOT 10 EXCEPT THE WEST 187 FEET, PYLE SUB DIVISION TO THE
 CITY OF MCPHERSON, KANSAS, AND THAT THE ACCOMPANYING PLAT IS A
 TRUE EXHIBIT OF SAID SURVEY AS FAR AS IT IS KNOWN TO ME.

SURVEY CALLED FOR BY BILL ADAMS

SIGNED THIS 3 DAY OF SEPTEMBER, 1968

Francis Rankin
 FRANCIS RANKIN
 PROFESSIONAL ENGINEER
 MCPHERSON, KANSAS

