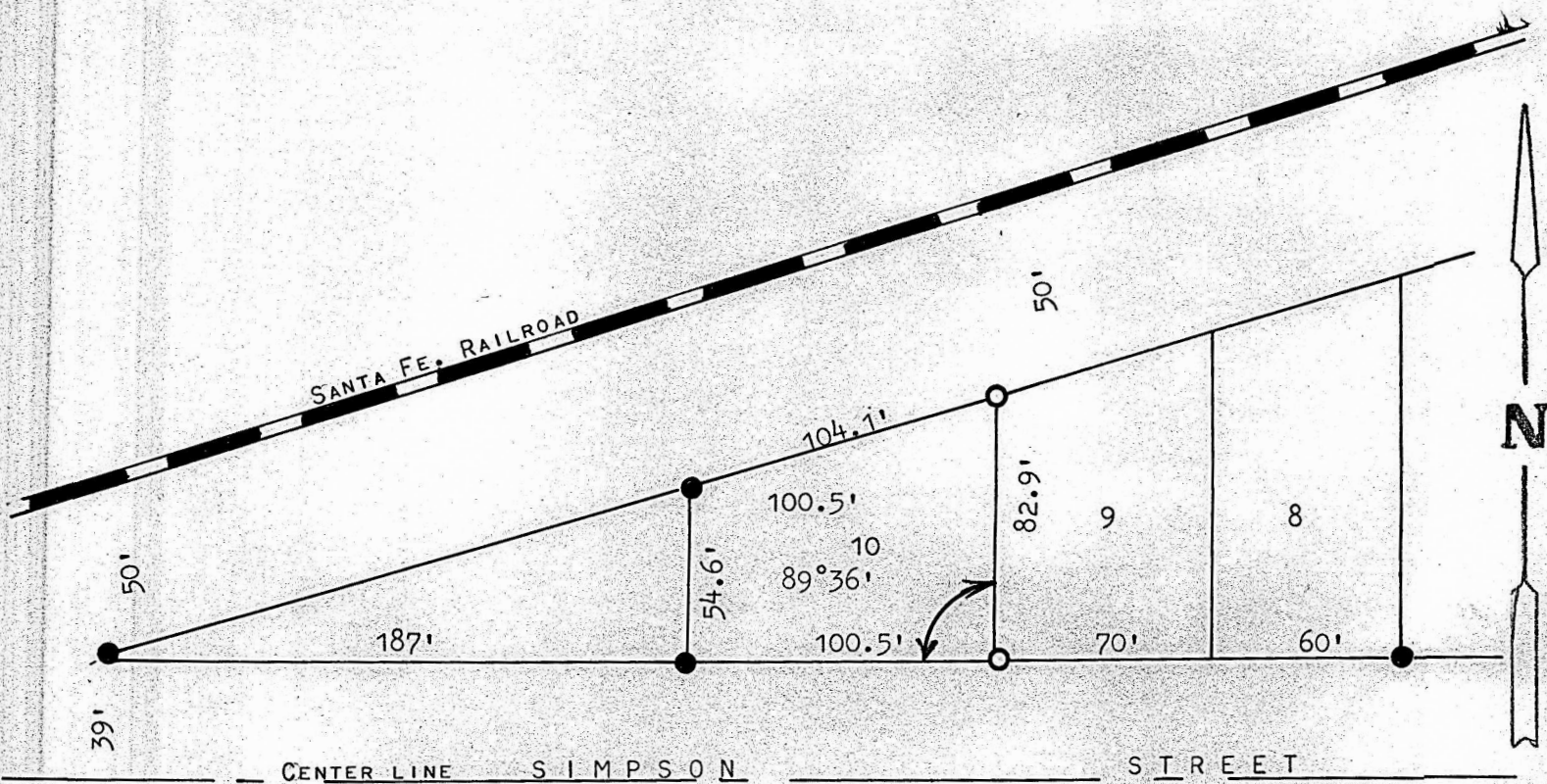


PYLE SUB DIVISION, MCPHERSON, KANSAS



- PINS FOUND THIS SURVEY  
○ PINS SET THIS SURVEY

STATE OF KANSAS )  
COUNTY OF MCPHERSON) SS

I, FRANCIS RANKIN, PROFESSIONAL ENGINEER OF THE STATE OF KANSAS DO HEREBY CERTIFY THAT UNDER MY SURERVISION A SURVEY WAS MADE OF LOT 10 EXCEPT THE WEST 187.0 FEET, PYLE SUB DIVISION TO THE CITY OF McPHERSON, KANSAS, AND THAT THE ACCOMPANYING PLAT IS A TRUE EXHIBIT OF SAID SURVEY AS FAR AS IT IS KNOWN TO ME.

SURVEY CALLED FOR BY BILL ADAMS

SIGNED THIS 2 DAY OF SEPTEMBER, 1968

FRANCIS RANKIN  
PROFESSIONAL ENGINEER  
MCPHERSON, KANSAS

