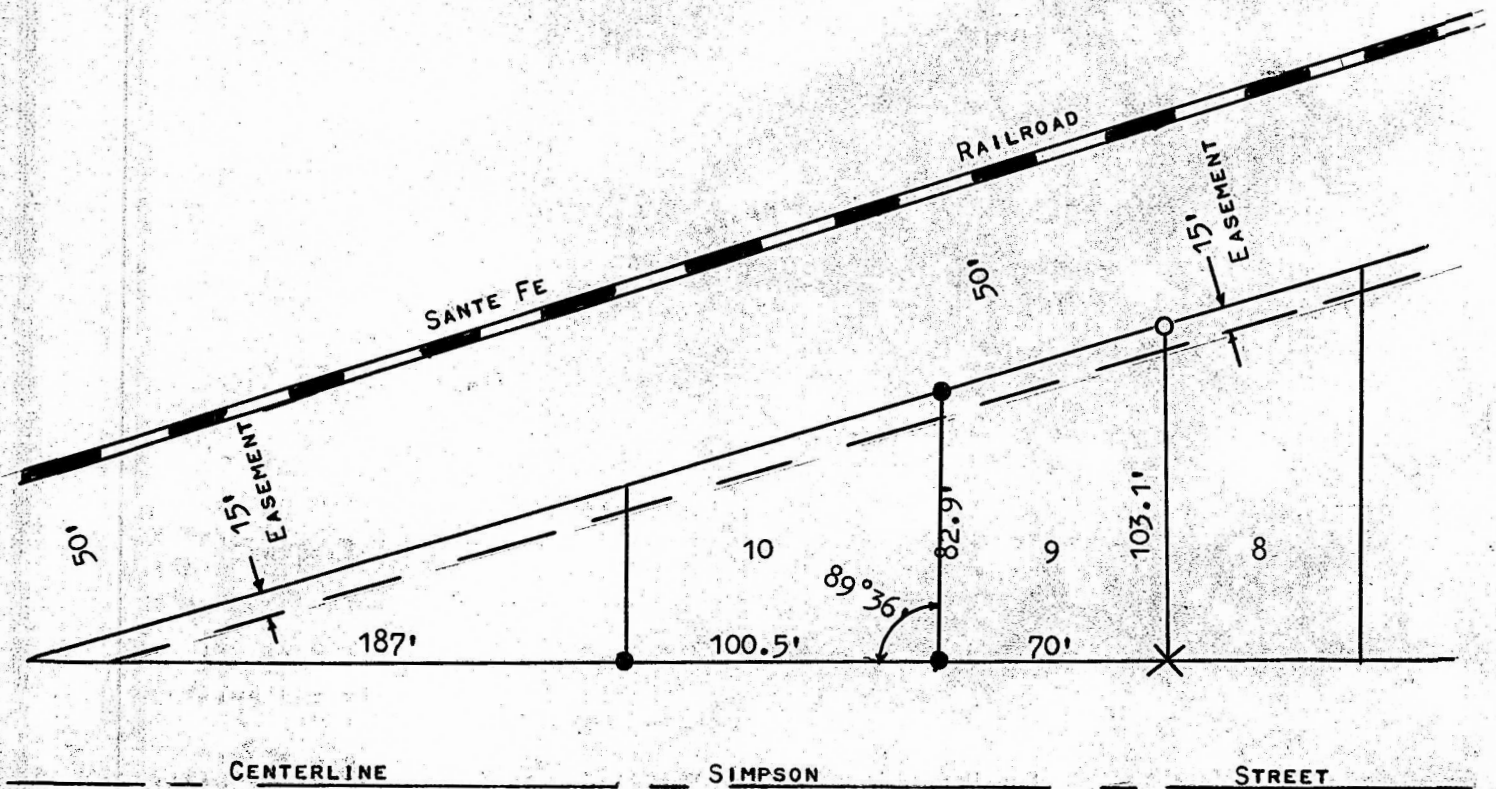


A SURVEY OF LOT 9,
PYLE SUB DIVISION,
MC PHERSON, KANSAS



- X "x" IN CONCRETE
- O PINS SET THIS SURVEY
- PINS FOUND THIS SURVEY

STATE OF KANSAS)
COUNTY OF McPHERSON) SS

I, FRANCIS RANKIN, COUNTY ENGINEER OF McPHERSON, KANSAS, DO HEREBY CERTIFY THAT UNDER MY SUPERVISION A SURVEY WAS MADE OF LOT 9, PYLE SUB DIVISION TO THE CITY OF McPHERSON, KANSAS, AND THAT THE ACCOMPANYING PLAT IS A TRUE EXHIBIT OF SAID SURVEY AS FAR AS IT IS KNOWN TO ME.

SURVEY CALLED FOR BY METHA SHAFT.

SIGNED THIS 16 DAY OF AUGUST, 1973.

Francis Rankin
FRANCIS RANKIN
COUNTY ENGINEER
McPHERSON, KANSAS

