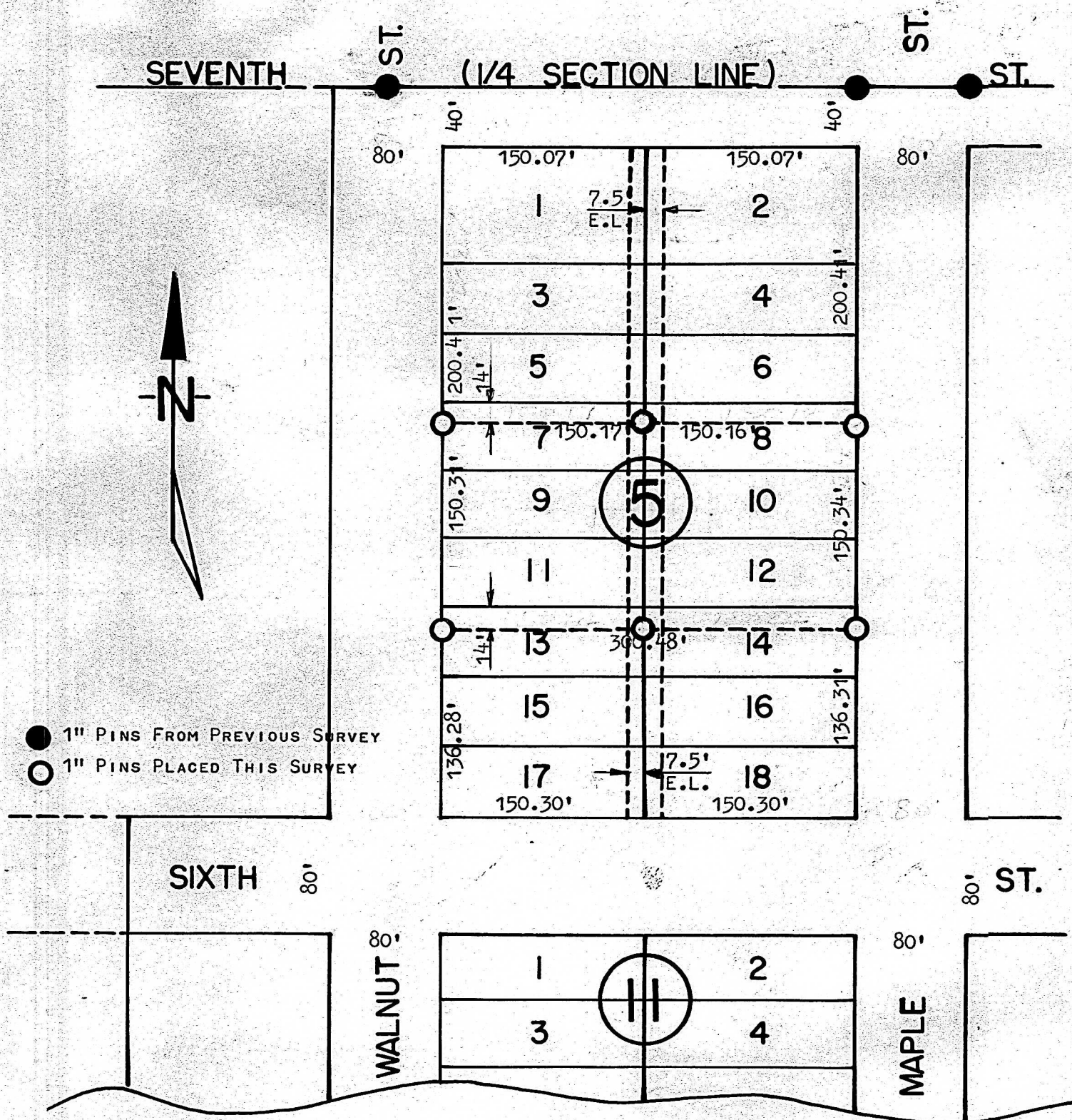


PROSPECT ADDITION

A SURVEY IN BLOCK 5



STATE OF KANSAS) SS
COUNTY OF McPHERSON)

I, FRANCIS D. WAGNER, COUNTY ENGINEER OF McPHERSON COUNTY, KANSAS DO HERBY CERTIFY THAT I DID ON THE 2ND DAY OF JUNE, 1959 A SURVEY OF LOTS 9, 10, 11 AND 12 AND THE NORTH 14' FEET OF LOTS 13 AND 14 AND THE SOUTH 36' FEET OF LOTS 7 AND 8 BLOCK 5, PROSPECT ADDITION TO THE CITY OF McPHERSON, KANSAS, AND THAT THE ACCOMPANYING PLAT IS A TRUE EXHIBIT OF SAID SURVEY.

Francis D. Wagner

FRANCIS D. WAGNER
COUNTY ENGINEER
McPHERSON COUNTY

JUNE 4, 1959

