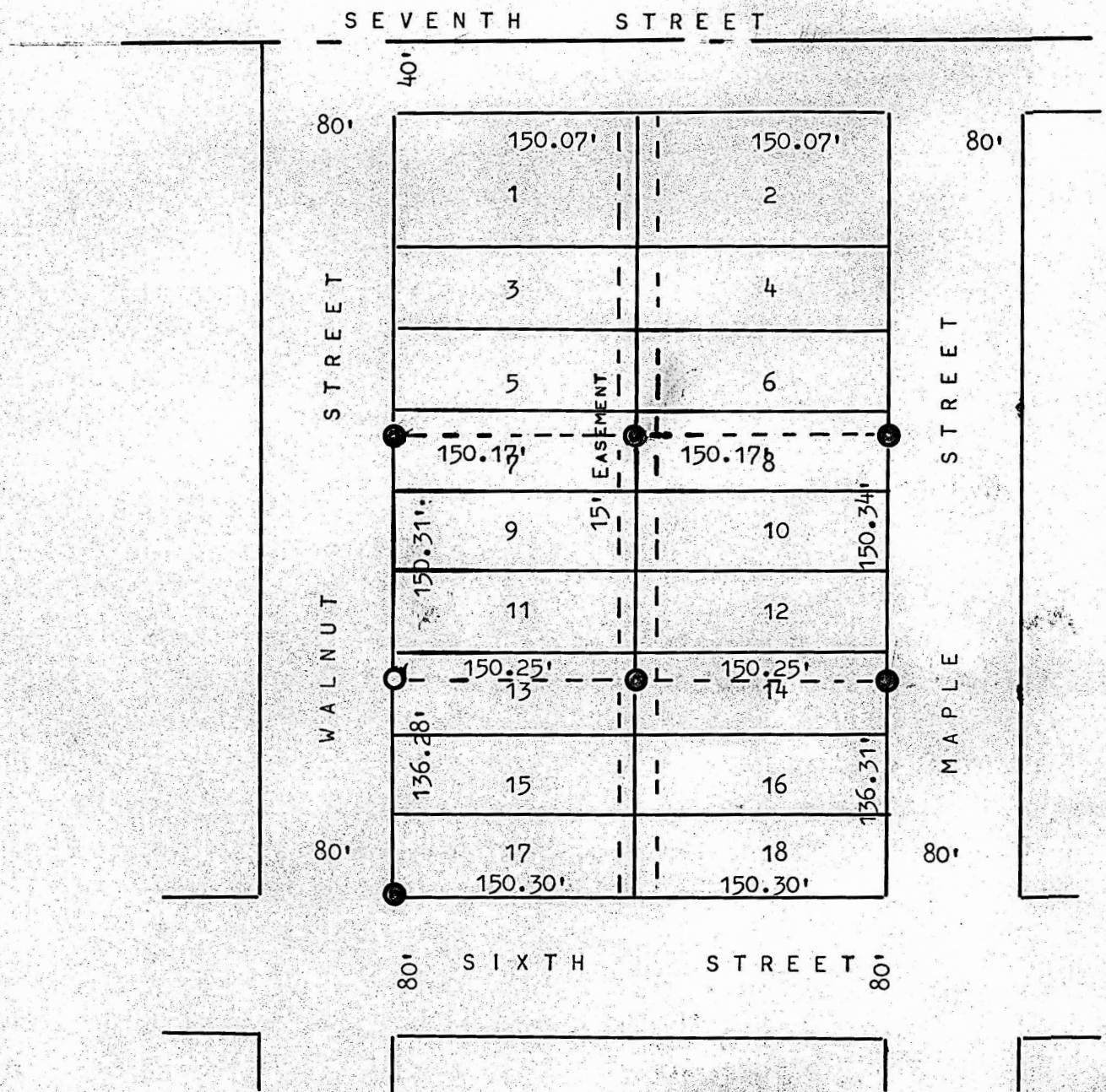


A SURVEY IN PROSPECT ADDITION
BLOCK 5, MCPHERSON, KANSAS



● PINS FOUND THIS SURVEY

○ PINS SET THIS SURVEY

STATE OF KANSAS)
COUNTY OF MCPHERSON) SS

I, MELVIN FERGUSON, PROFESSIONAL ENGINEER OF THE STATE OF KANSAS DO HEREBY CERTIFY THAT UNDER MY SUPERVISION A SURVEY WAS MADE OF LOTS 9, 10, 11 AND 12 AND THE NORTH 14 FEET OF LOTS 13 AND 14 AND THE SOUTH 36 FEET OF LOTS 7 AND 8, BLOCK 5, PROSPECT ADDITION TO THE CITY OF MCPHERSON, KANSAS, AND THAT THE ACCOMPANYING PLAT IS A TRUE EXHIBIT OF SAID SURVEY AS FAR AS IT IS KNOWN TO ME.

SURVEY CALLED FOR BY HARRY SPRAGUE

SIGNED THIS 12th DAY OF NOVEMBER, 1982

Melvin Ferguson
MELVIN FERGUSON
PROFESSIONAL ENGINEER
MCPHERSON, KANSAS

