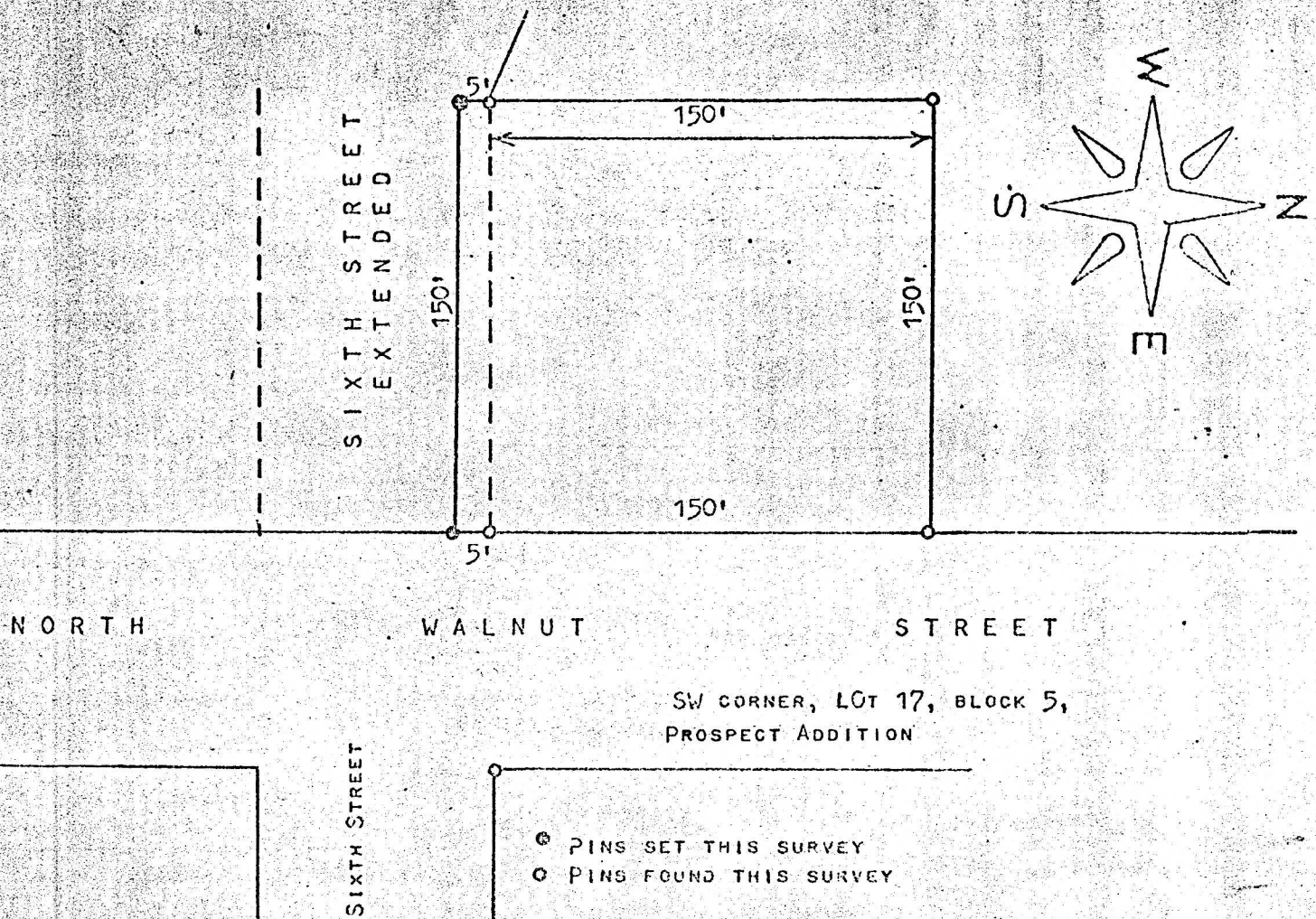


A SURVEY OF A TRACT OF LAND IN THE  
SE 1/4, SECTION 20, T19S, R3W,  
McPHERSON, KANSAS



STATE OF KANSAS)  
COUNTY OF MCPHERSON) SS

I, Melvin Ferguson, County Engineer of McPherson County, Kansas do hereby certify that under my supervision a survey was made of the North 5 feet of sixth street extended 150 feet west of the Westside of Walnut Street in McPherson, Kansas and a tract of land beginning at a point 80 feet West of the SW corner of Lot 17, Block 5, Prospect Addition to the City of McPherson, Kansas and also being a point on the West Line of Walnut Street; thence North 150 feet along West Line of Walnut Street; thence West 150 feet; thence South 150 feet to the North line of Sixth Street extended; thence East 150 feet to a place of beginning. Said tracts of land are in the SE 1/4 Section 20, T19S, R3W, McPherson County, Kansas. The accompanying plat is a true exhibit of said survey as far as it is known to me.

Survey called for by Charles Williams

Signed this 19th day of March, 1974

*Melvin Ferguson*  
Melvin Ferguson, P. E.  
County Engineer  
McPherson County, Kansas



MICROFILM