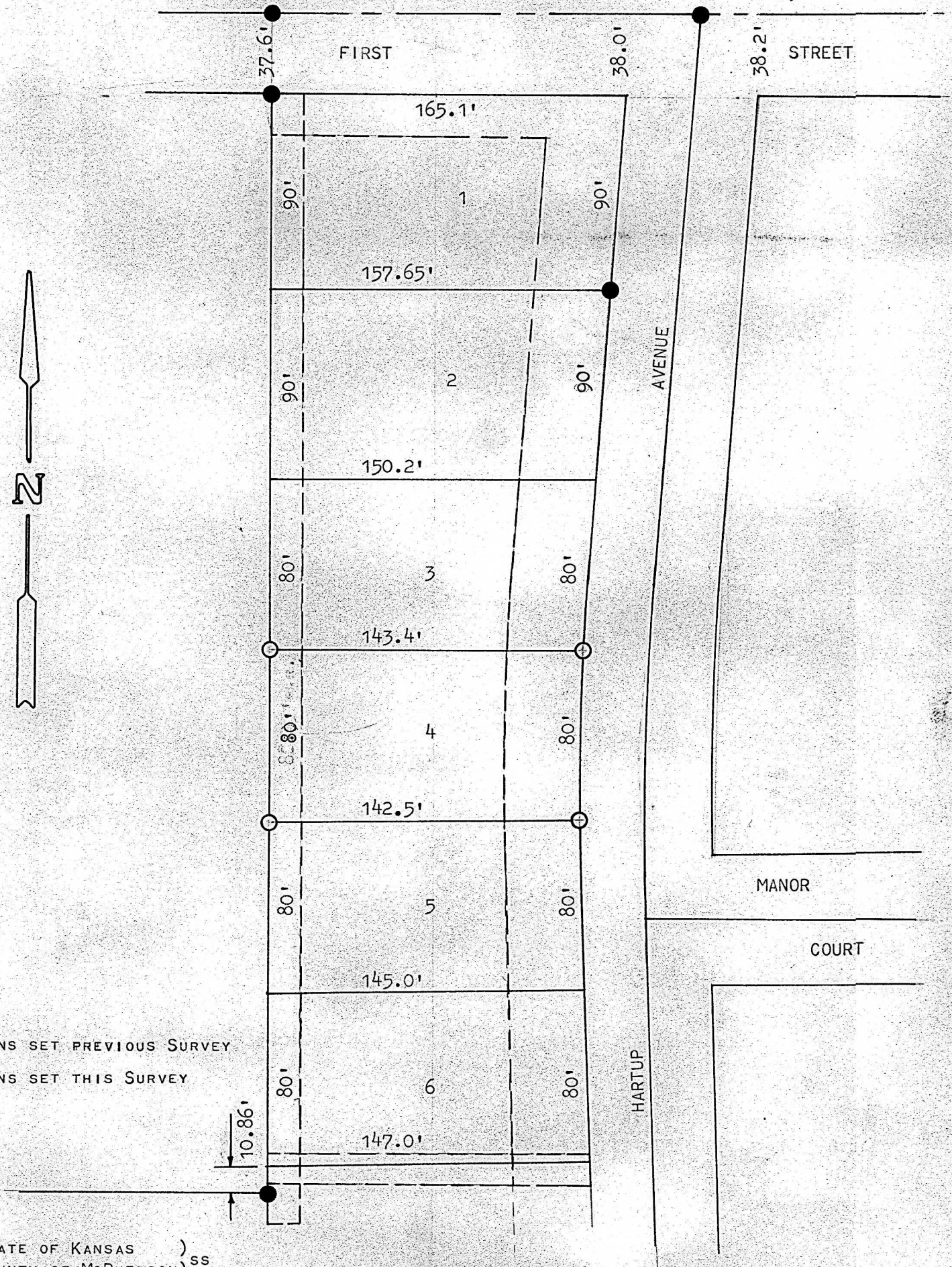


McPHERSON, KANSAS
A SURVEY OF LOT 4 BLOCK 2
PRAIRIE MANOR ADDITION



● PINS SET PREVIOUS SURVEY
○ PINS SET THIS SURVEY



STATE OF KANSAS)
COUNTY OF MCPHERSON)^{SS}

I, F. R. RANKIN, COUNTY ENGINEER OF MCPHERSON, KANSAS, DO HEREBY CERTIFY THAT UNDER MY SUPERVISION A SURVEY WAS MADE OF LOT 4 BLOCK 2, PRAIRIE MANOR ADDITION TO THE CITY OF MCPHERSON, KANSAS, AND THE ABOVE PLAT IS A TRUE EXHIBIT OF SAID SURVEY AS FAR AS IT IS KNOWN TO ME.

SURVEY CALLED FOR BY JOE HARMAN

SIGNED THIS 26 DAY OF SEPTEMBER.

F. R. RANKIN
COUNTY ENGINEER
MCPHERSON, KANSAS

