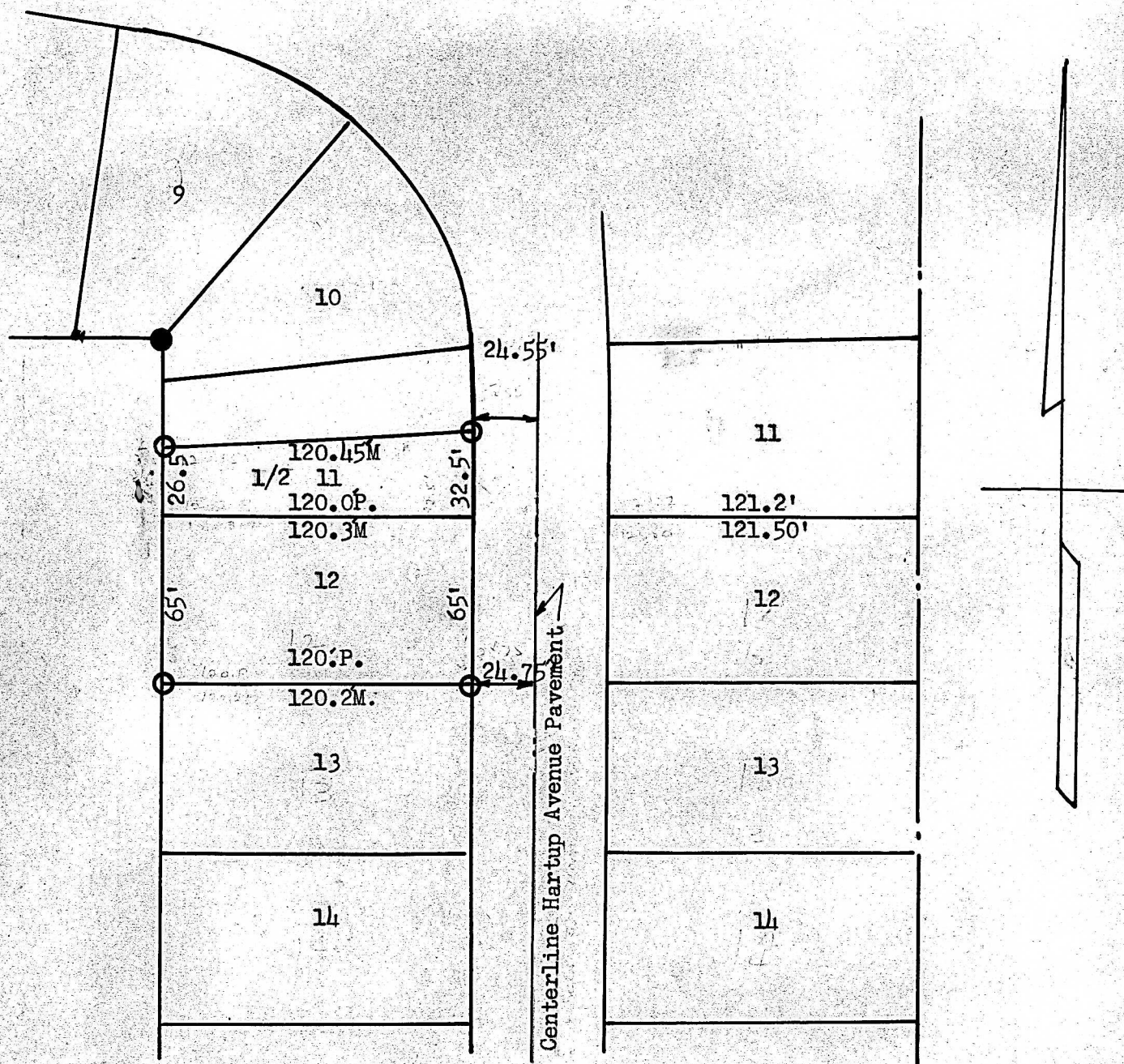


A SURVEY OF LOT 12 and SOUTH HALF OF LOT 11
BLOCK 3 PINE ACRES
SUB-DIVISION



- PINS IN PLACE
- PIN SET ON THIS SURVEY

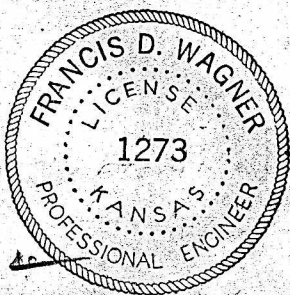
State of Kansas)
County of McPherson) SS

I, Francis D. Wagner, County Engineer of McPherson County, Kansas, do hereby certify that I did cause to be done on the 23rd day of September, 1955, a survey of lot 12 and South half of lot 11 Block 3, Pine Acres sub-division to the City of McPherson, and that the accompanying plat is a true exhibit of said survey.

Francis D. Wagner

Francis D. Wagner
County Engineer

September 26, 1955



MICROFILM