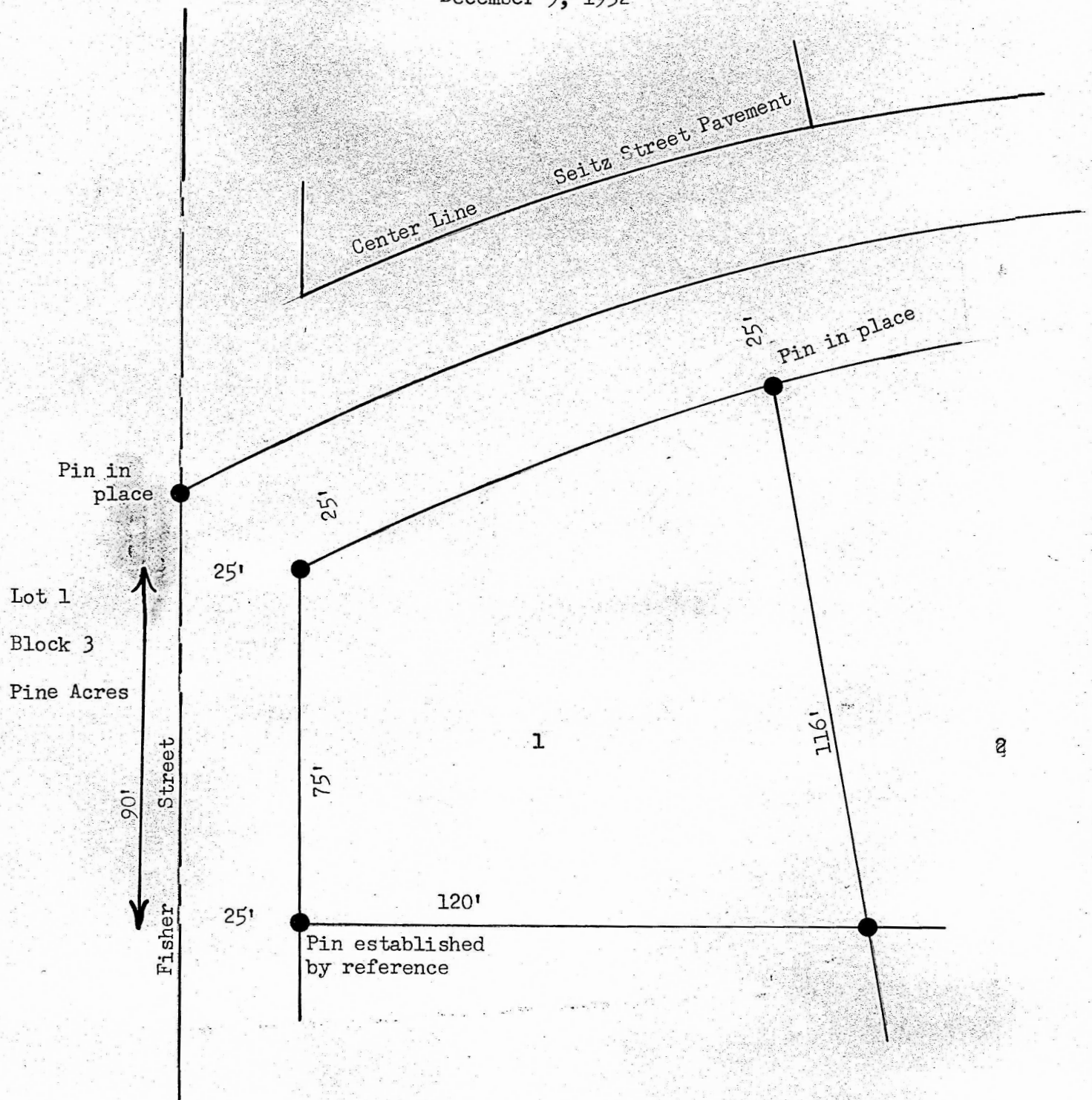


(Copy)

December 9, 1952



State of Kansas, County of McPherson, ss

I, Francis D. Wagner, County Engineer of McPherson County, Kansas did on the 9th day of December, 1952 a survey that determined the corners of Lot 1, Block 3, Pine Acres Sub-division of City of McPherson, Kansas and that the accompanying plat is a true exhibit of said survey.

FRANCIS D. WAGNER
County Engineer
McPherson County

MICROFILM