

H. A. ROWLAND • Kansas Licensed Civil Engineer

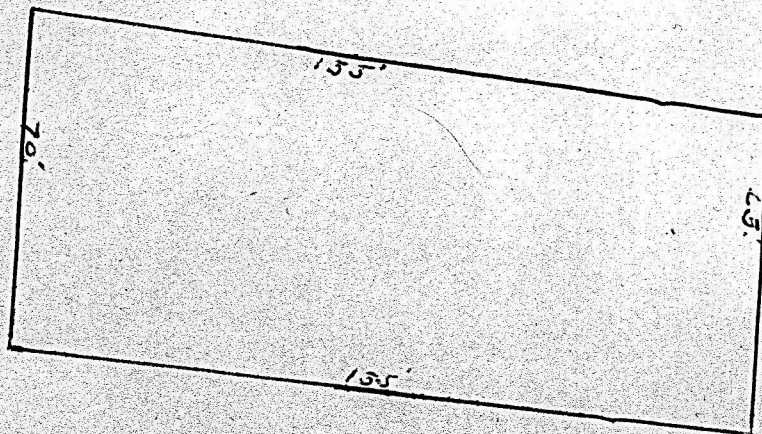
Member

National Society Professional Engineers
Kansas Society Professional Engineers
Kansas Engineering Society

PLAT OF
LOT 15, BLOCK 2 IN PINE ACRES
A SUBDIVISION OF
MCPHERSON, KANSAS.

PHONE 796 X

McPHERSON, KANSAS

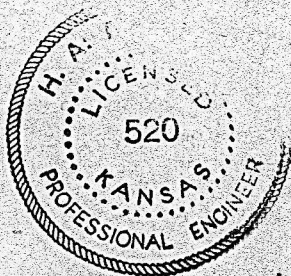


Scale 1 in. 40 ft.

STATE OF KANSAS,)
McPherson County) ss.,

THIS IS TO CERTIFY, THAT the above plat of Lot 15 in Block 2 of Pine Acres A Subdivision of McPherson, Kansas, and is in accordance with a survey made by me. I marked to corners with iron pins. McPherson, Kansas Nov. 13th 1950.

Signed:- H. A. Rowland
A Kansas Registered Professional Engineer.



MICROFILM