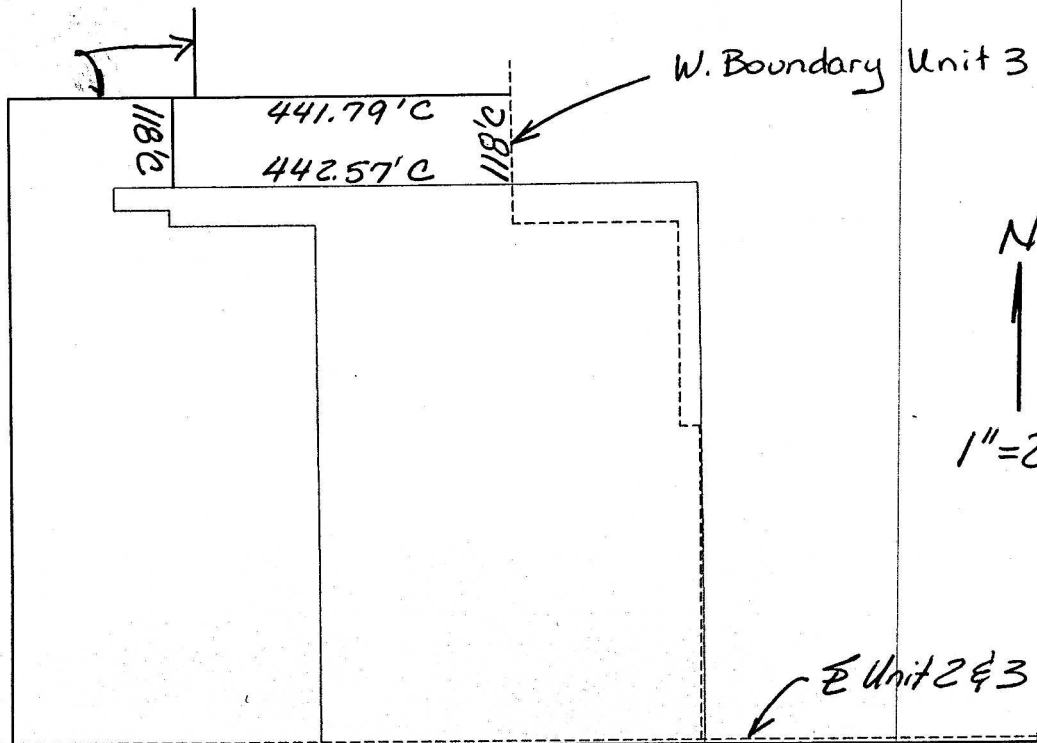


Boundary  
Hillside Ac.



N  
↑  
1"=250'

↖ Hillside Acres  
& Pleasant View Est.

↑  
1/4 Cor.  
Adj. Unit 23

Melanie L. Thrower, Land Surveyor, May 6, 2005

Survey Note: The original tract described in deed is a 40 rod by 8 rod tract, less a R/W for Hudson Street.. The plat boundaries for Hillside Acres and Pleasant View Estates were drawn. Then the plat for Pleasant View Estates Unit 2 and Unit 3 using the new  $\frac{1}{4}$  corner were drawn. The effect and calculations to the remaining tract of Russell & Lori Willems is shown on this sketch.

There are three possible dimensions to the tract, the Deed distance, D, based on the deeds of record and a rod equaling 16.5 feet; the Calculated distance based on the layout of the tracts shown in this sketch, and the measured distance based on the measured distance from the pins in the field.

