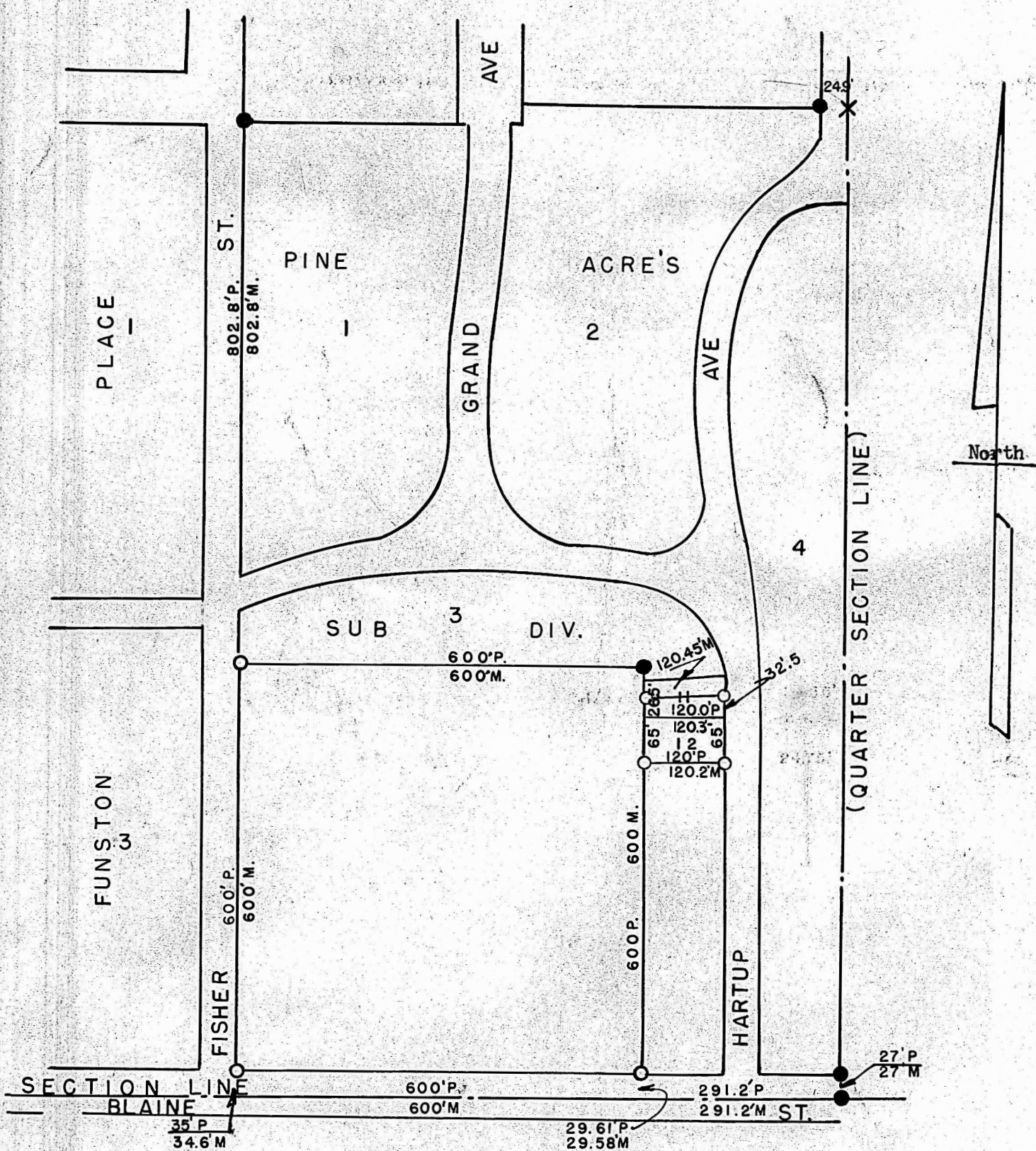


# PLAT OF SURVEY IN PINE ACRES



- PINS IN PLACES
- PIN SET ON THIS SURVEY

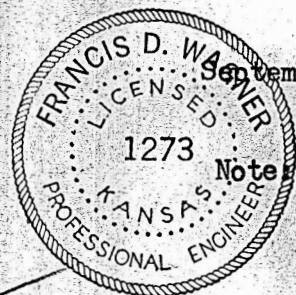
State of Kansas )  
County of McPherson ) SS

I, Francis D. Wagner, County Engineer of McPherson, County do hereby certify that I did cause to be done the 23rd day of September, 1955, a survey to re-establish the original corner of Pine Acres sub-division to the City of McPherson, and that the accompanying plat is a true exhibit of said survey.

*Francis D. Wagner*

Francis D. Wagner  
County Engineer

September 26, 1955



Note: Section line is a true line between Common Corner and Quarter Corner.