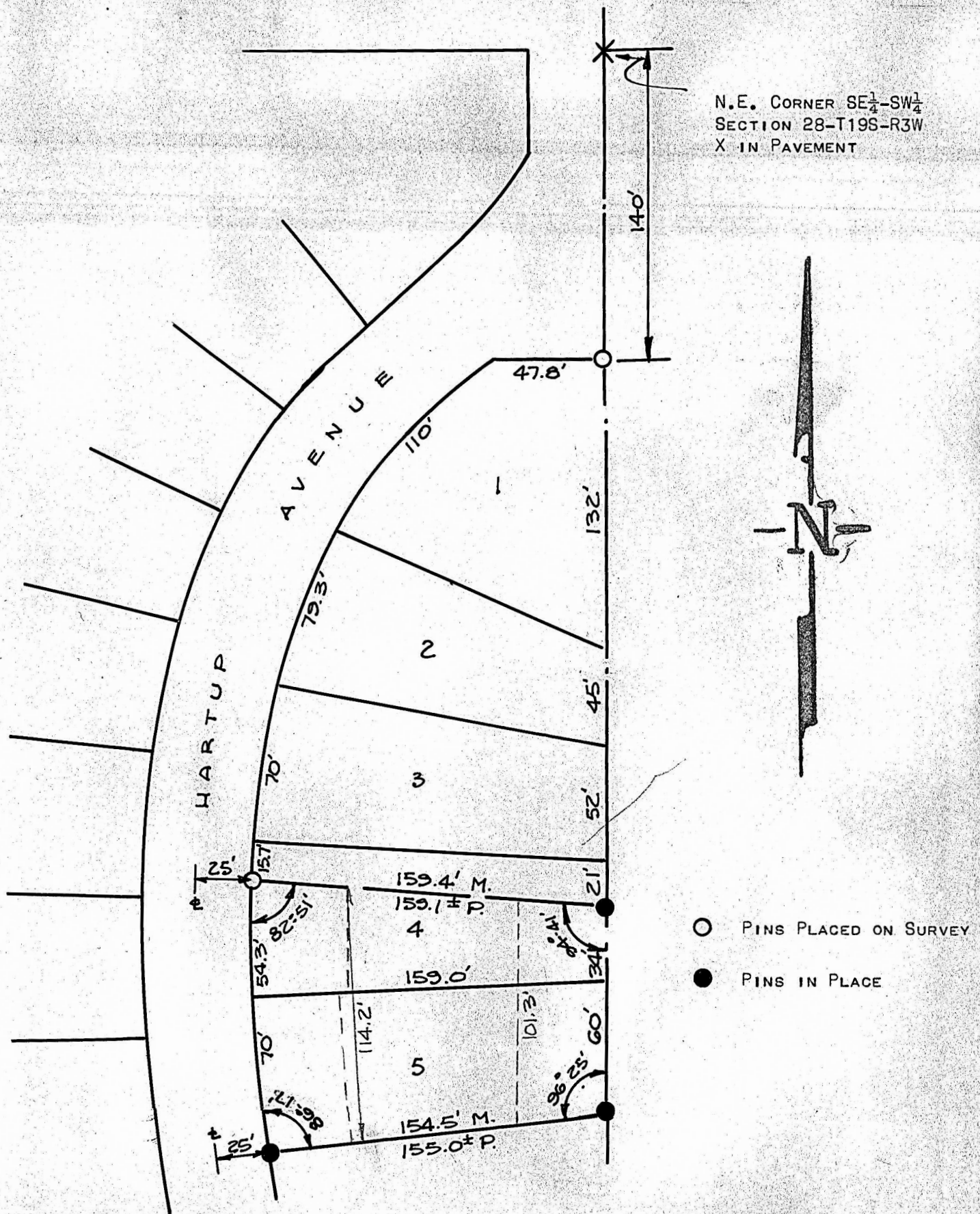


A SURVEY OF LOT 5 AND PART LOT 4 BLOCK 4
PINE ACRES SUB-DIVISION
MC PHERSON, KANSAS

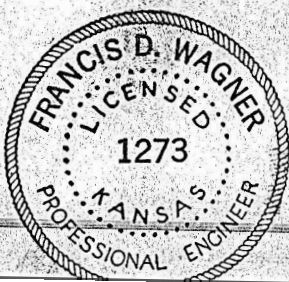


STATE OF KANSAS)
COUNTY OF McPHERSON) SS

I, FRANCIS D. WAGNER, COUNTY ENGINEER OF McPHERSON COUNTY, KANSAS DO HEREBY CERTIFY THAT I DID CAUSE TO BE DONE ON THE 20TH DAY OF MARCH, 1957 A SURVEY OF LOT 5 AND PART OF LOT 4 BLOCK 4 PINE ACRES SUB-DIVISION TO THE CITY OF McPHERSON, AND THAT THE ACCOMPANYING PLAT IS A TRUE EXHIBIT OF SAID SURVEY.

MICROFILM

MARCH 20, 1957



Francis D. Wagner
FRANCIS D. WAGNER
COUNTY ENGINEER