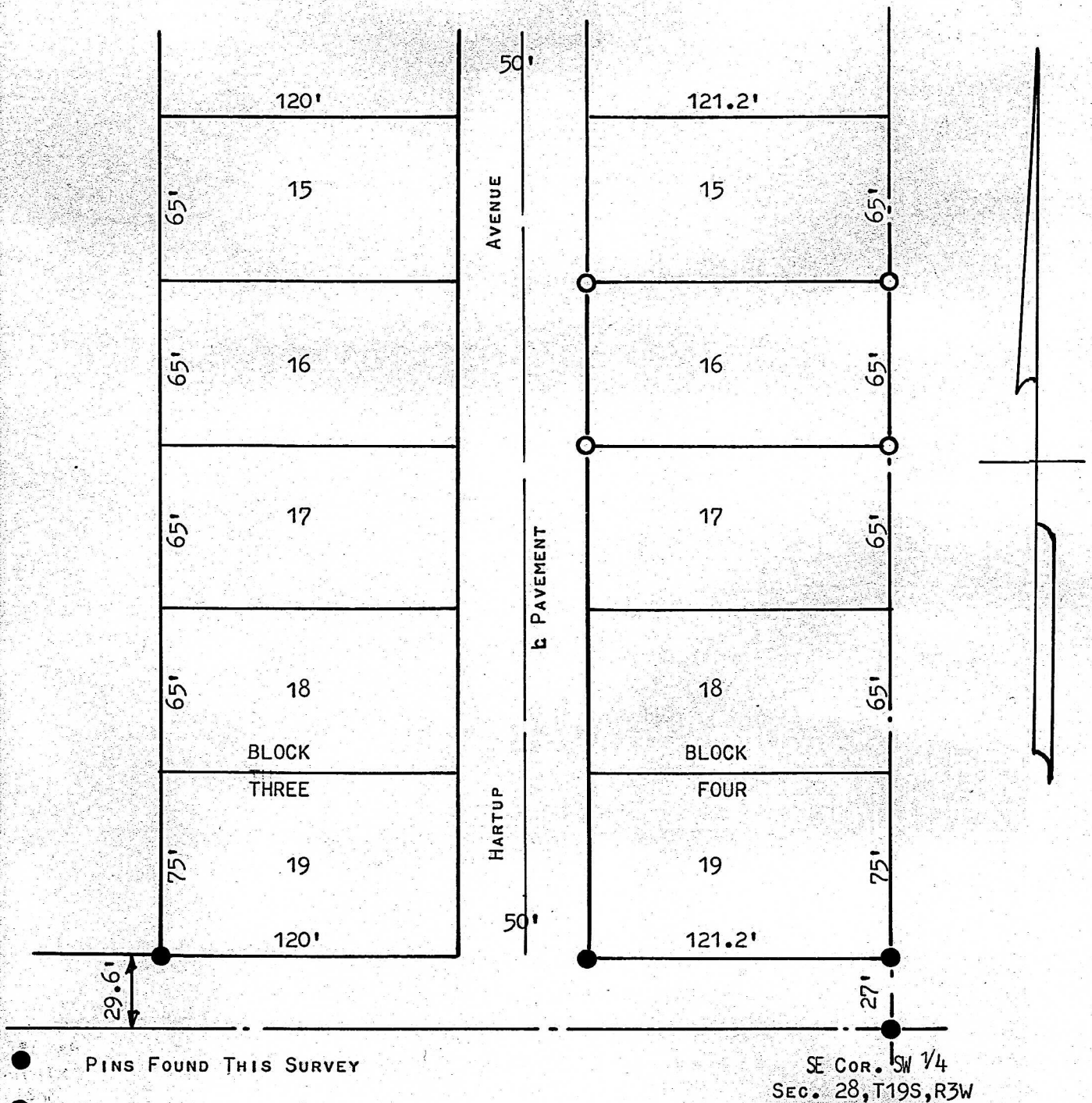


A SURVEY OF LOT 16 BLOCK 4 PINE ACRES
SUBDIVISION TO THE CITY OF
MCPHERSON



STATE OF KANSAS) SS
COUNTY OF MCPHERSON)

I FRANCIS D. WAGNER, COUNTY ENGINEER OF MCPHERSON COUNTY, KANSAS, DO HEREBY CERTIFY THAT I DID CAUSE TO BE DONE ON THE 20 DAY OF SEPTEMBER, 1958 A SURVEY OF LOT 16 BLOCK FOUR OF PINE ACRES SUBDIVISION TO THE CITY OF MCPHERSON AND THAT THE ACCOMPANYING PLAT IS A TRUE EXHIBIT OF SAID SURVEY.

OCTOBER 23, 1958

Francis D. Wagner
FRANCIS D. WAGNER
COUNTY ENGINEER
MCPHERSON COUNTY

MICROFILM