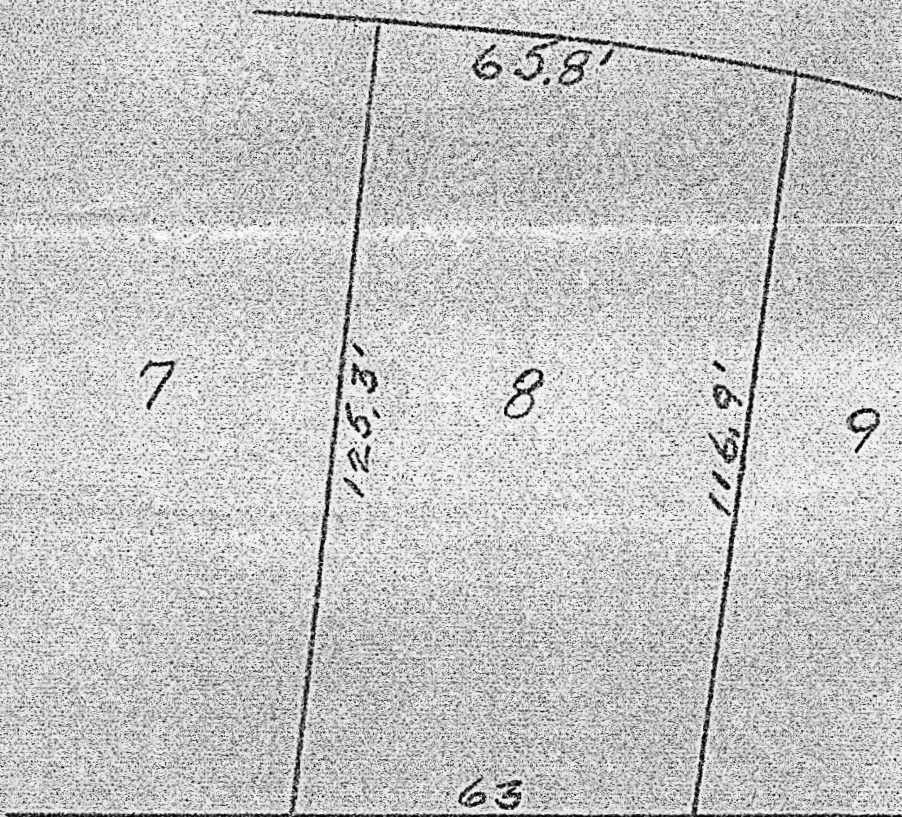


Lot 8, Block 3, Pine Acres Subdivision,
McPherson, Kansas.

EAST SEITZ ST.



State of Kansas, County of McPherson, ss.

I, G.D. Johnson, Licensed Civil Engineer of the State of Kansas,
do hereby certify that I did on the 14th. day of July, 1952 survey
Lot 8, Block 3, Pine Acres Subdivision in the City of McPherson,
Kansas and that accompanying plat is a true exhibit of said survey.

G.D. Johnson

