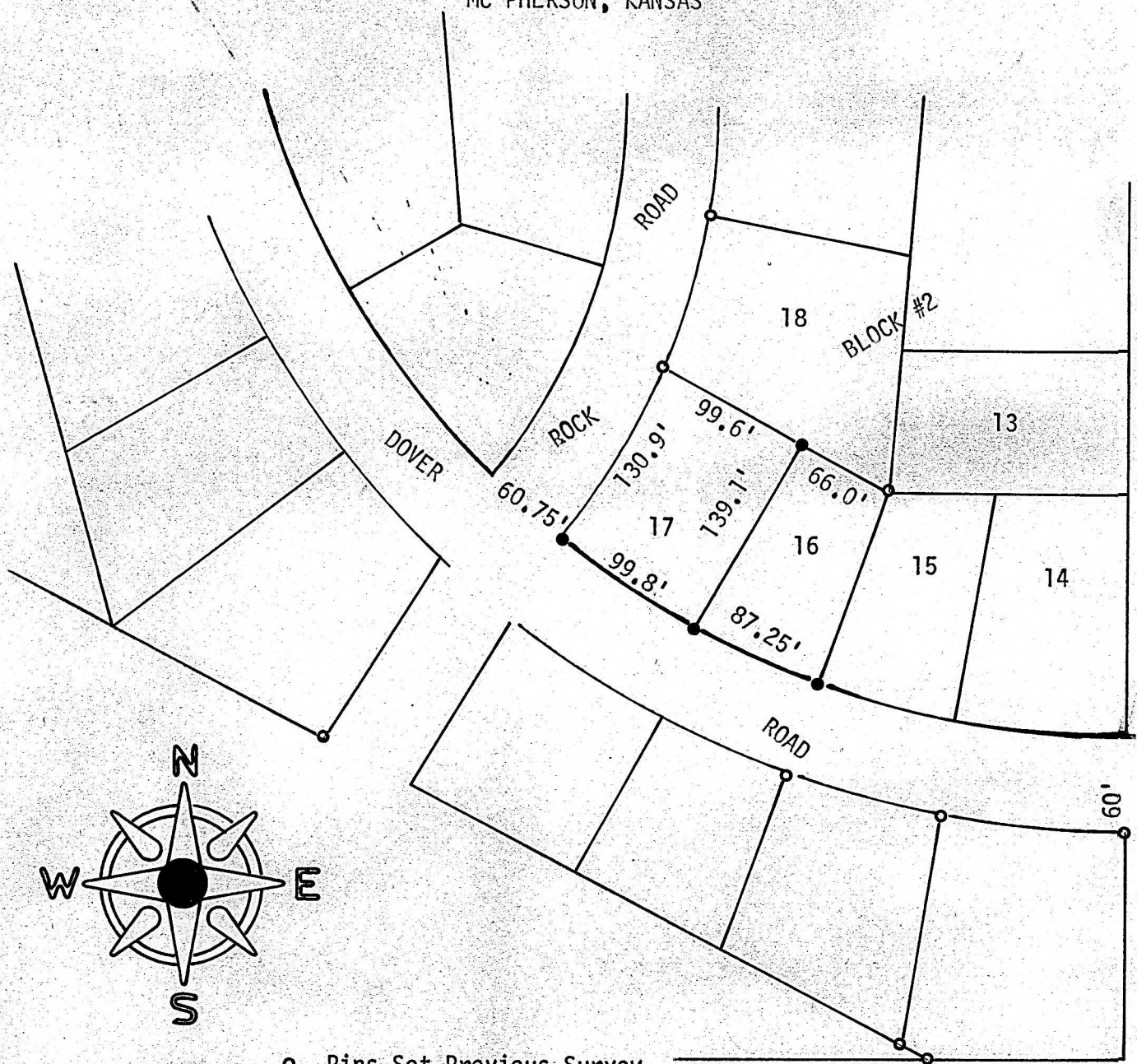


SURVEY LOT 17, BLOCK 2  
PARK PLACE ADDITION  
MC PHERSON, KANSAS



- Pins Set Previous Survey
- Pins Set This Survey

State of Kansas )  
County of McPherson) S.S.

I, F. R. Rankin, County Engineer of McPherson County, Kansas, do hereby certify that under my supervision a survey was made of Lot 17, Block 2, Park Place Addition to the City of McPherson, Kansas. The above plat is a true exhibit as far as it is known to me.

Survey requested by Harris Development

Signed this 13 day of December, 1973

*F. R. Rankin*  
F. R. Rankin, P. E.  
Administrator of P.W. & Co. Engr.  
McPherson, Kansas

