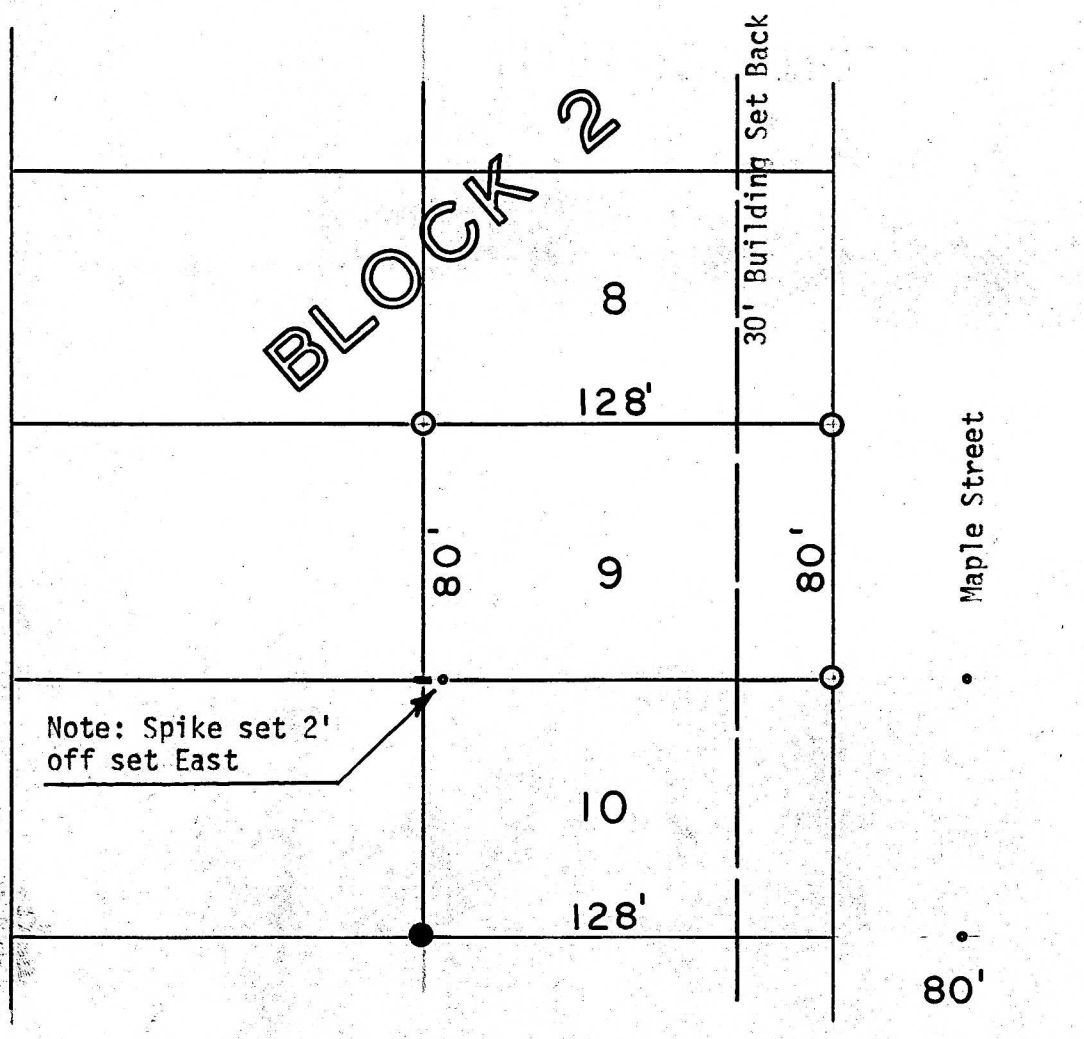
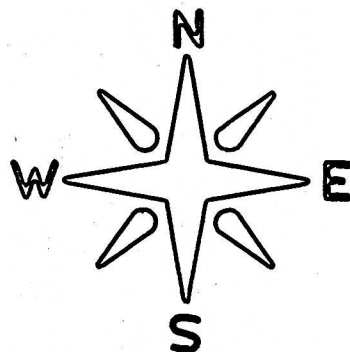


Survey Lot 9 block 2
PARK PLACE ADDITION
McPherson, Kansas



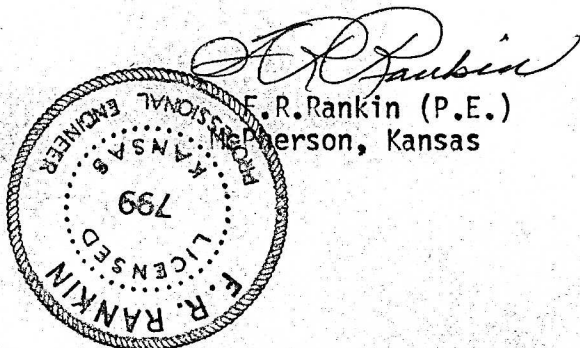
- Pin found this survey
- Pins set this survey
- Groove cut in concrete
- Spike in Pavement

State of Kansas)
County of McPherson) S.S.

I, F.R. Rankin, Professional Engineer of the state of Kansas, do hereby certify that under my supervision a survey was made of Lot 9 Block 2 of Park Place Addition to the City of McPherson, Kansas and the above plat is a true exhibit of said survey as far as it is known to me.

Survey requested by Ted Washburn

Signed this 24 day May, 1973



F.R. Rankin (P.E.)
McPherson, Kansas