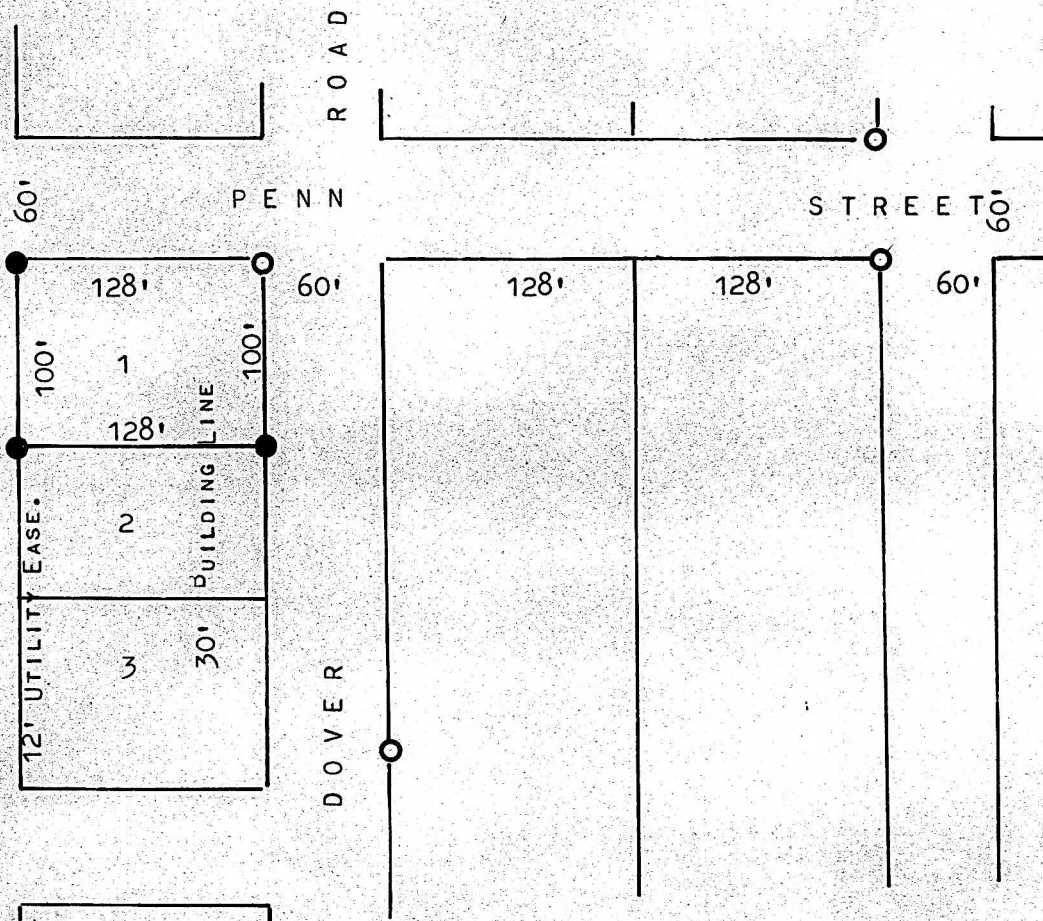


A SURVEY OF LOT 1, BLOCK 9, PARK PLACE  
MCPHERSON, KANSAS



- PINS SET THIS SURVEY
- PINS FOUND THIS SURVEY

STATE OF KANSAS )  
COUNTY OF MCPHERSON ) SS

I, MELVIN FERGUSON, PROFESSIONAL ENGINEER OF THE STATE OF KANSAS  
DO HEREBY CERTIFY THAT UNDER MY SUPERVISION A SURVEY WAS MADE OF  
LOT 1, BLOCK 9, PARK PLACE TO THE CITY OF MCPHERSON, KANSAS AND  
THAT THE ACCOMPANYING PLAT IS A TRUE EXHIBIT OF SAID SURVEY, AS  
FAR AS IT IS KNOWN TO ME.

SURVEY CALLED FOR BY HAROLD SCHLENDER

SIGNED THIS 15<sup>th</sup> DAY OF SEPTEMBER, 1975

MELVIN FERGUSON  
PROFESSIONAL ENGINEER  
MCPHERSON, KANSAS  
6772