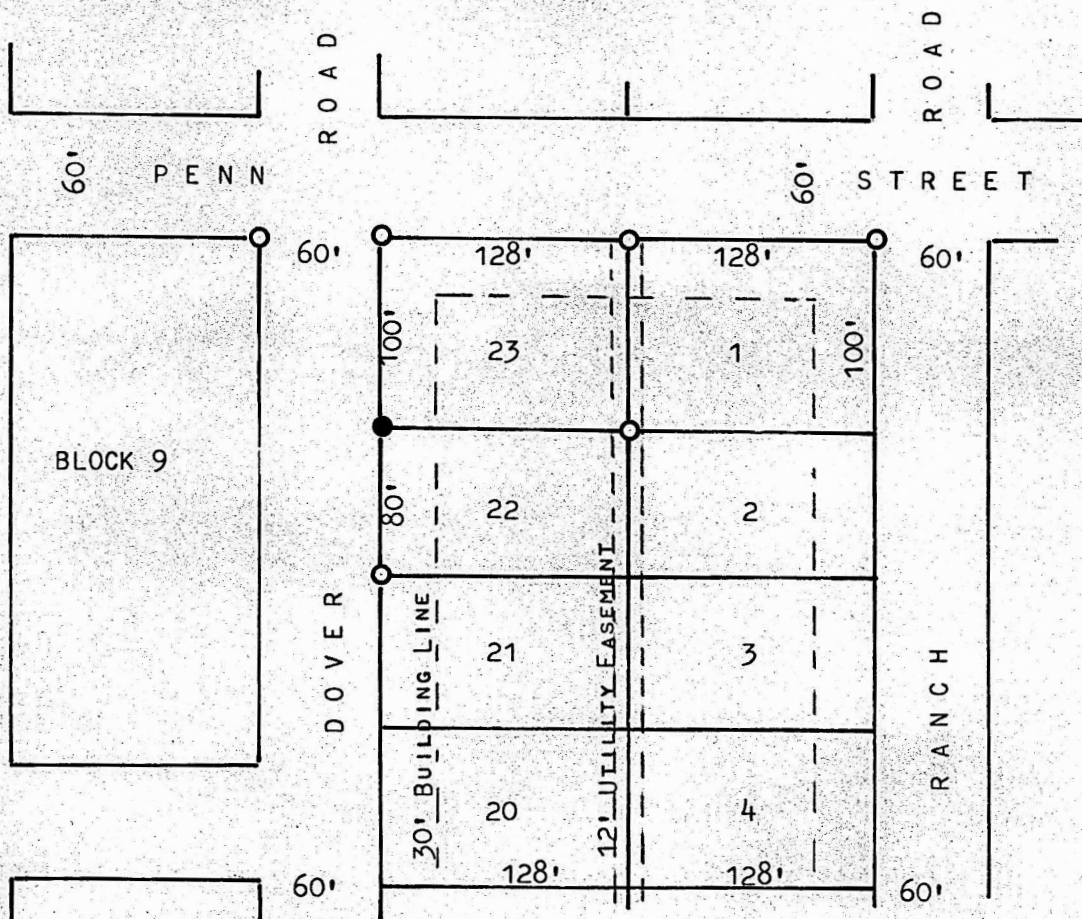


A SURVEY OF LOT 23, BLOCK 5, PARK PLACE
MCPHERSON, KANSAS



- PINS SET THIS SURVEY
- PINS FOUND THIS SURVEY

STATE OF KANSAS)
COUNTY OF MCPHERSON) ss

I, MELVIN FERGUSON, COUNTY ENGINEER OF MCPHERSON COUNTY, KANSAS DO HEREBY CERTIFY THAT UNDER MY SUPERVISION A SURVEY WAS MADE OF LOT 23, BLOCK 5, PARK PLACE ADDITION, TO THE CITY OF MCPHERSON, KANSAS, AND THAT THE ACCOMPANYING PLAT IS A TRUE EXHIBIT OF SAID SURVEY, AS FAR AS IT IS KNOWN TO ME.

SURVEY CALLED FOR BY HAROLD SCHLENDER

SIGNED THIS 17th DAY OF SEPTEMBER, 1975

MELVIN FERGUSON
COUNTY ENGINEER
MCPHERSON COUNTY

