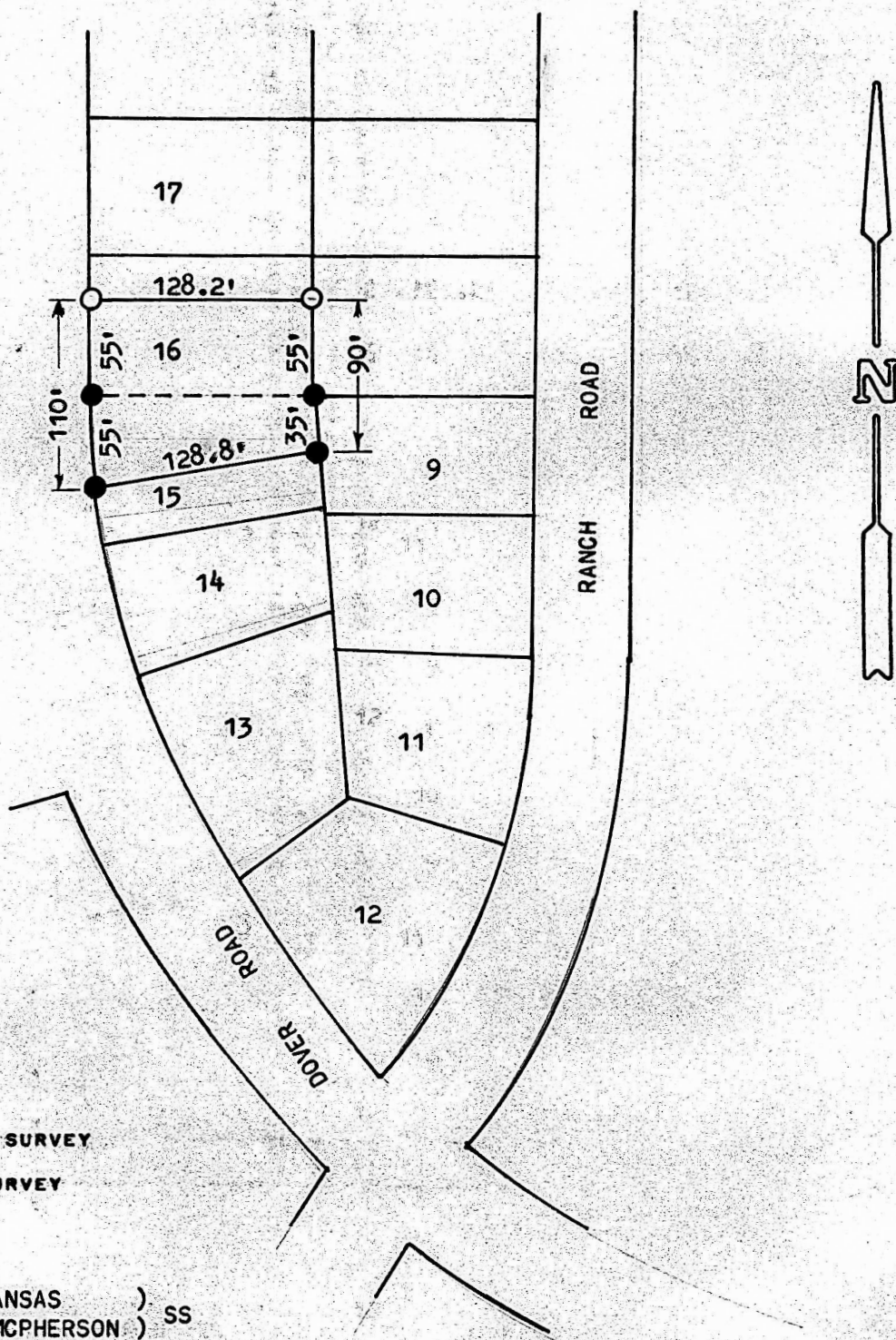


A SURVEY OF PARTS OF LOTS 15 & 16, BLOCK 5,
PARK PLACE ADDITION, MCPHERSON, KANSAS



I, MELVIN FERGUSON, COUNTY ENGINEER OF MCPHERSON COUNTY, KANSAS, DO HEREBY CERTIFY THAT UNDER MY SUPERVISION A SURVEY WAS MADE OF LOT 15, EXCEPT THE SOUTH 30 FEET, AND THE SOUTH 55 FEET OF LOT 16, BLOCK 5, PARK PLACE ADDITION TO THE CITY OF MCPHERSON, KANSAS, AND THAT THE ABOVE PLAT IS A TRUE EXHIBIT OF SAID SURVEY AS FAR AS IT IS KNOWN TO ME.

SURVEY CALLED FOR BY GOERTZEN BUILDERS.

SIGNED THIS 9th DAY OF AUGUST, 1974.

Melvin Ferguson
MELVIN FERGUSON
COUNTY ENGINEER
MCPHERSON COUNTY, KANSAS
6772
KANSAS
PROFESSIONAL ENGINEER