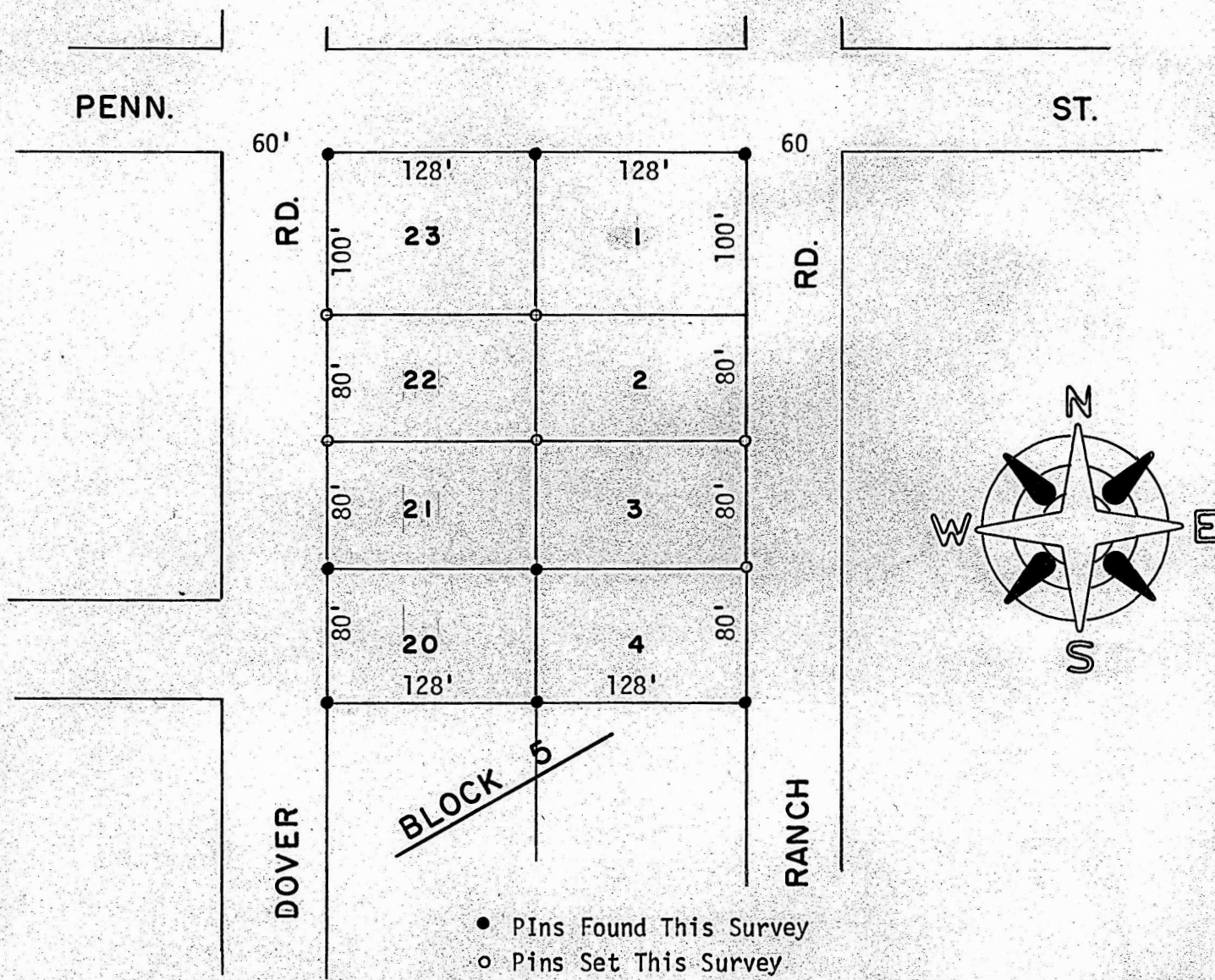


SURVEY LOT 22 & 23, BLOCK 5
PARK PLACE ADDITION
MC PHERSON, KANSAS



State of Kansas)
County of McPherson) SS

I, F. R. Rankin, County Engineer of McPherson County, Kansas, do hereby certify that under my supervision a survey was made of Lots 22 and 23, Block 5, Park Place Addition to the City of McPherson, Kansas. The above plat is a true exhibit of said survey as far as it is known to me.

Survey requested by Roy Sager

Signed this 15 DAY of November, 1973

F. R. Rankin
F. R. Rankin, P. E.
Administrator of P. E. & County Engr.
McPherson, Kansas

