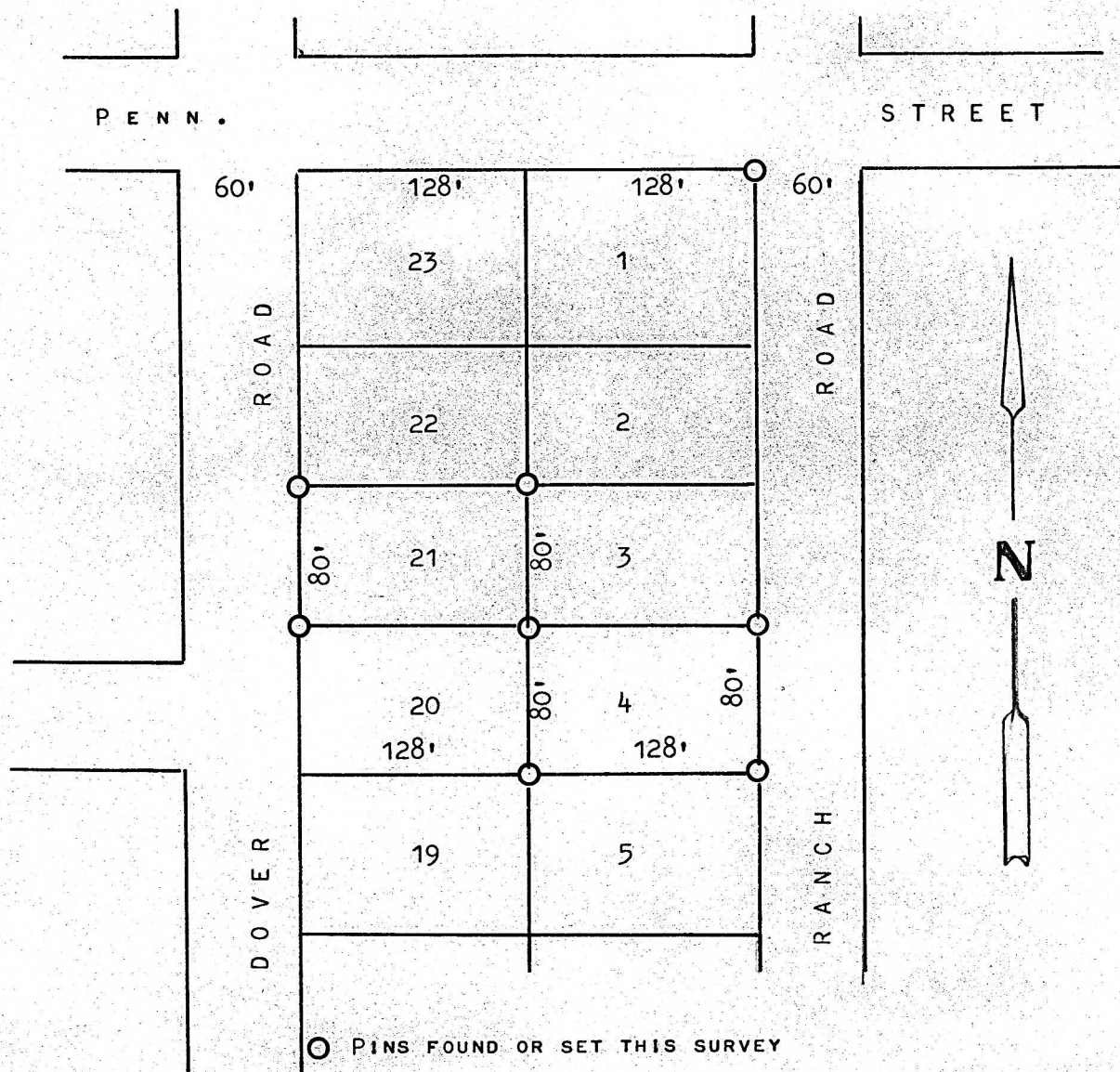


SURVEY OF LOTS 21 & LOT 4, BLOCK 5
PARK PLACE ADDITION
MCPHERSON, KANSAS



STATE OF KANSAS)
COUNTY OF MCPHERSON) SS

I, MELVIN FERGUSON, PROFESSIONAL ENGINEER OF THE STATE OF KANSAS
DO HEREBY CERTIFY THAT UNDER MY SUPERVISION A SURVEY WAS MADE OF
LOT 21 AND LOT 4, BLOCK 5, PARK PLACE ADDITION TO THE CITY OF
MCPHERSON, KANSAS AND THAT THE ABOVE PLAT IS A TRUE EXHIBIT OF SAID
SURVEY AS FAR AS IT IS KNOWN TO ME.

SURVEY REQUESTED BY ROBIN BOWERS

SIGNED THIS 21st DAY OF MAY, 1974

Melvin Ferguson
MELVIN FERGUSON
PROFESSIONAL ENGINEER
MCPHERSON, KANSAS

