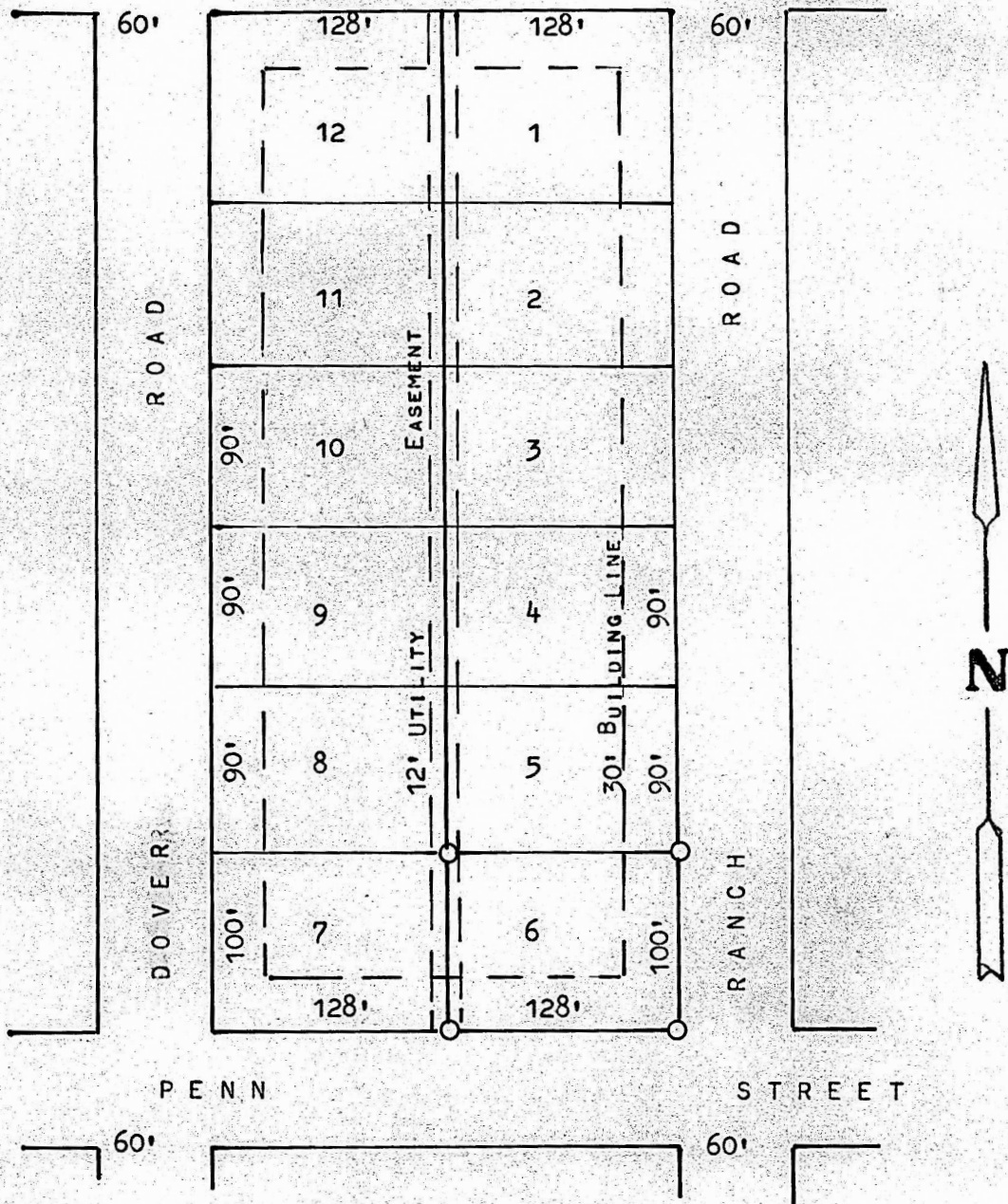


A SURVEY OF LOT 6, BLOCK 4
PARK PLACE ADDITION,
MC PHERSON, KANSAS



○ PINS FOUND OR SET THIS SURVEY

STATE OF KANSAS)
COUNTY OF MCPHERSON) SS

I, MELVIN FERGUSON, PROFESSIONAL ENGINEER OF THE STATE OF KANSAS DO
HEREBY CERTIFY THAT UNDER MY SUPERVISION A SURVEY WAS MADE OF LOT 6,
BLOCK 4, PARK PLACE ADDITION, TO THE CITY OF MCPHERSON, KANSAS, AND
THAT THE ABOVE PLAT IS A TRUE EXHIBIT OF SAID SURVEY AS FAR AS IT IS
KNOWN TO ME.

SURVEY CALLED FOR BY HARRIS DEVELOPMENT

SIGNED THIS 18th DAY OF NOVEMBER, 1974

Melvin Ferguson
MELVIN FERGUSON

PROFESSIONAL ENGINEER
MCPHERSON, KANSAS

