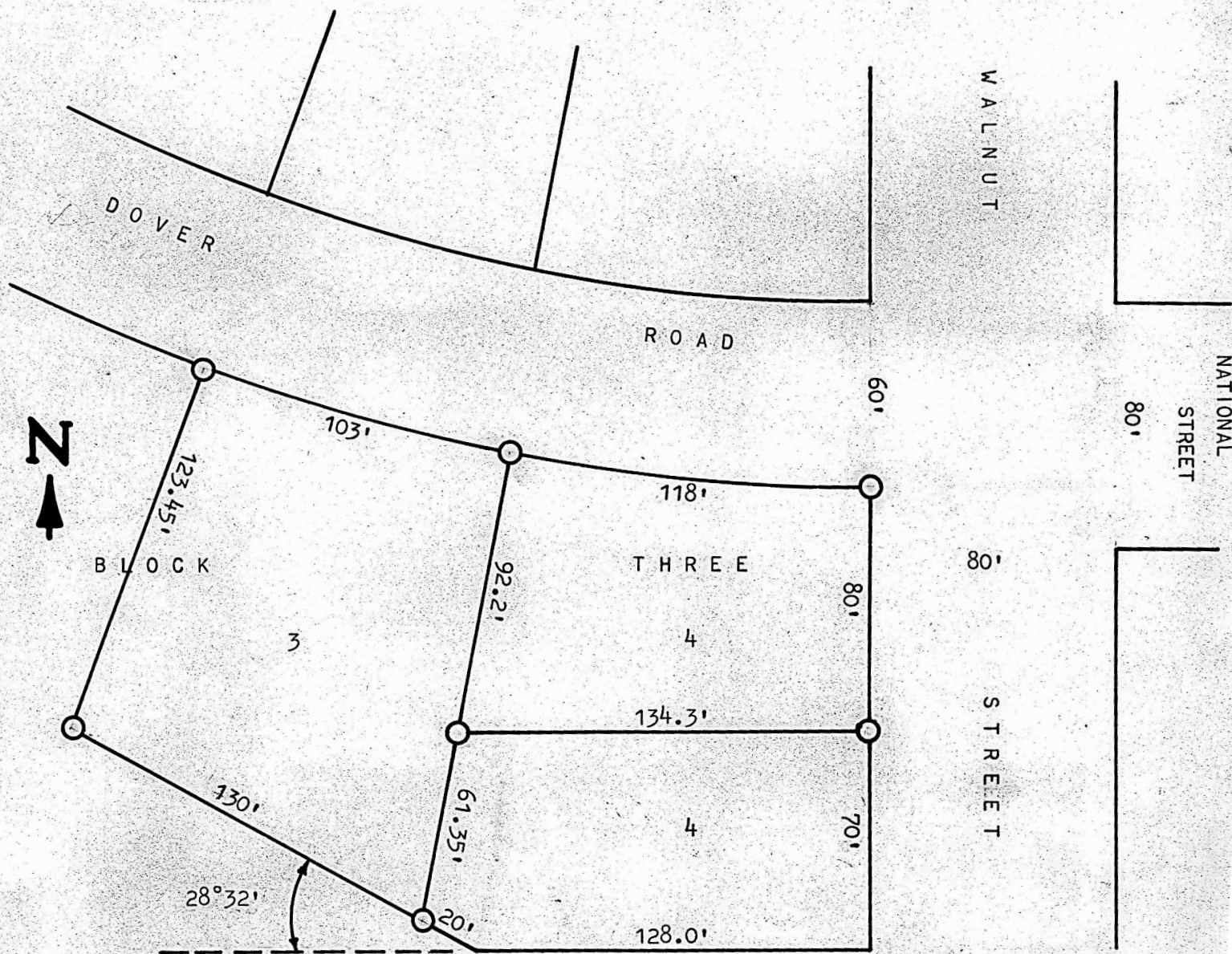


A SURVEY OF LOT 3 AND THE NORTH 80' OF LOT 4, BLK. 3

PARK PLACE SUBDIVISION

McPHERSON, KANSAS



○ PINS SET THIS SURVEY

STATE OF KANSAS)
COUNTY OF MCPHERSON) SS

I, FRANCIS R. RANKIN, COUNTY ENGINEER OF MCPHERSON COUNTY, KANSAS, DO HEREBY CERTIFY THAT UNDER MY SUPERVISION A SURVEY WAS MADE OF LOT 3 AND THE NORTH 80' OF LOT 4 BLOCK 3 PARK PLACE SUBDIVISION TO THE CITY OF MCPHERSON, KANSAS, AND THAT THE ACCOMPANYING PLAT IS A TRUE EXHIBIT OF SAID SURVEY AS FAR AS IT IS KNOWN TO ME.

SURVEY CALLED FOR BY JOHN BREMYER.

SIGNED THIS 30 DAY OF JULY, 1965.



FRANCIS RANKIN
COUNTY ENGINEER
MCPHERSON CO. KANSAS

MICROFILM