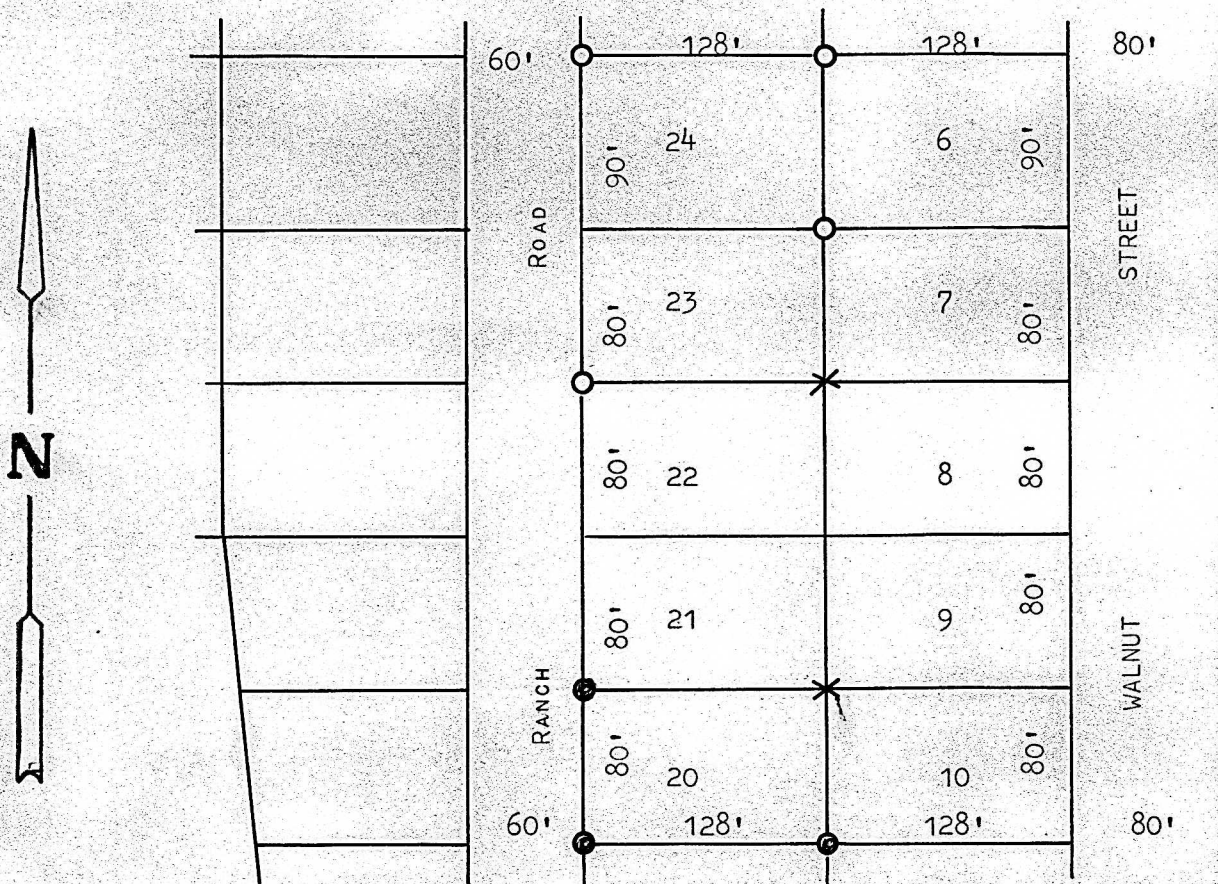


A SURVEY OF LOT 20, BLOCK 2
PARK PLACE ADDITION
CITY OF MCPHERSON
KANSAS



- PINS FOUND THIS SURVEY
- PINS SET THIS SURVEY
- ✕ MARK ON TOP OF ELECTRIC BOX

STATE OF KANSAS)
COUNTY OF MCPHERSON) SS

I, FRANCIS RANKIN, PROFESSIONAL ENGINEER OF THE STATE OF KANSAS
DO HEREBY CERTIFY THAT UNDER MY SUPERVISION A SURVEY WAS DONE
OF LOT 20, BLOCK 2, PARK PLACE ADDITION, TO THE CITY OF MCPHERSON
KANSAS, AND THAT THE ABOVE PLAT IS A TRUE EXHIBIT OF SAID SURVEY
AS FAR AS IT IS KNOWN TO ME.

SURVEY CALLED FOR BY HAROLD SIGLE

SIGNED THIS 13 DAY OF AUGUST, 1967

Francis Rankin
FRANCIS RANKIN
PROFESSIONAL ENGINEER
MCPHERSON, KANSAS

