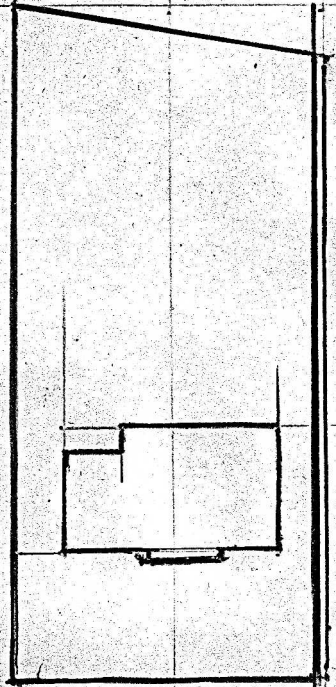


H. A. ROWLAND § Kansas License

Member:

National Society Professional Engineers
Kansas Society Professional Engineers
Kansas Engineering Society

PLAT OF LOT 3
Of
NORTH PARK ADDITION TO MC
KANSAS.



STATE OF KANSAS, McPherson County, ss.,
THIS IS TO CERTIFY, That, I, H. A. Rowland,
make a survey of the said lot 33 in Park
and that the building located on the said
to the said survey.
Dated at McPherson, Kansas, Aug. 27th 1948

Signed:-

Regis

MICROFILM