

H. A. ROWLAND § Kansas Licensed Civil Engineer

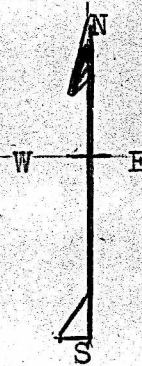
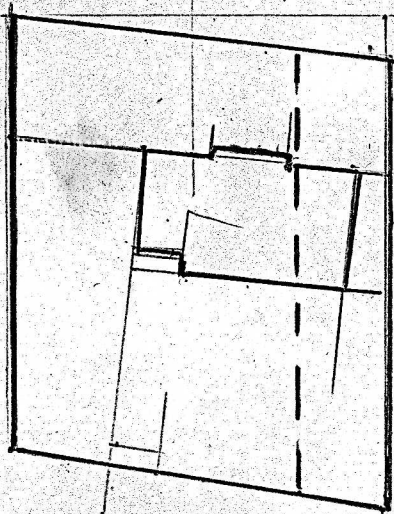
5w208 lot 13

Member:

National Society Professional Engineers
Kansas Society Professional Engineers
Kansas Engineering Society

PLAT OF
LOT 10 of NORTH PARK ADDITION
TO
MCPHERSON, KANSAS.

PHONE 796X
McPHERSON, KANSAS



Scale 1" 40'

STATE OF KANSAS, McPherson County, ss.,

This is to Certify, That, I, H. A. Rowland, a professional engineer, have made a survey of the above described property Lot 12 in North Park Addition to McPherson, Kansas, and that it and the building located thereon is according to the said survey.

Dated at McPherson, Kansas, Aug. 27th 1948.

Signed:- H. A. Rowland
Registered Professional Engineer.