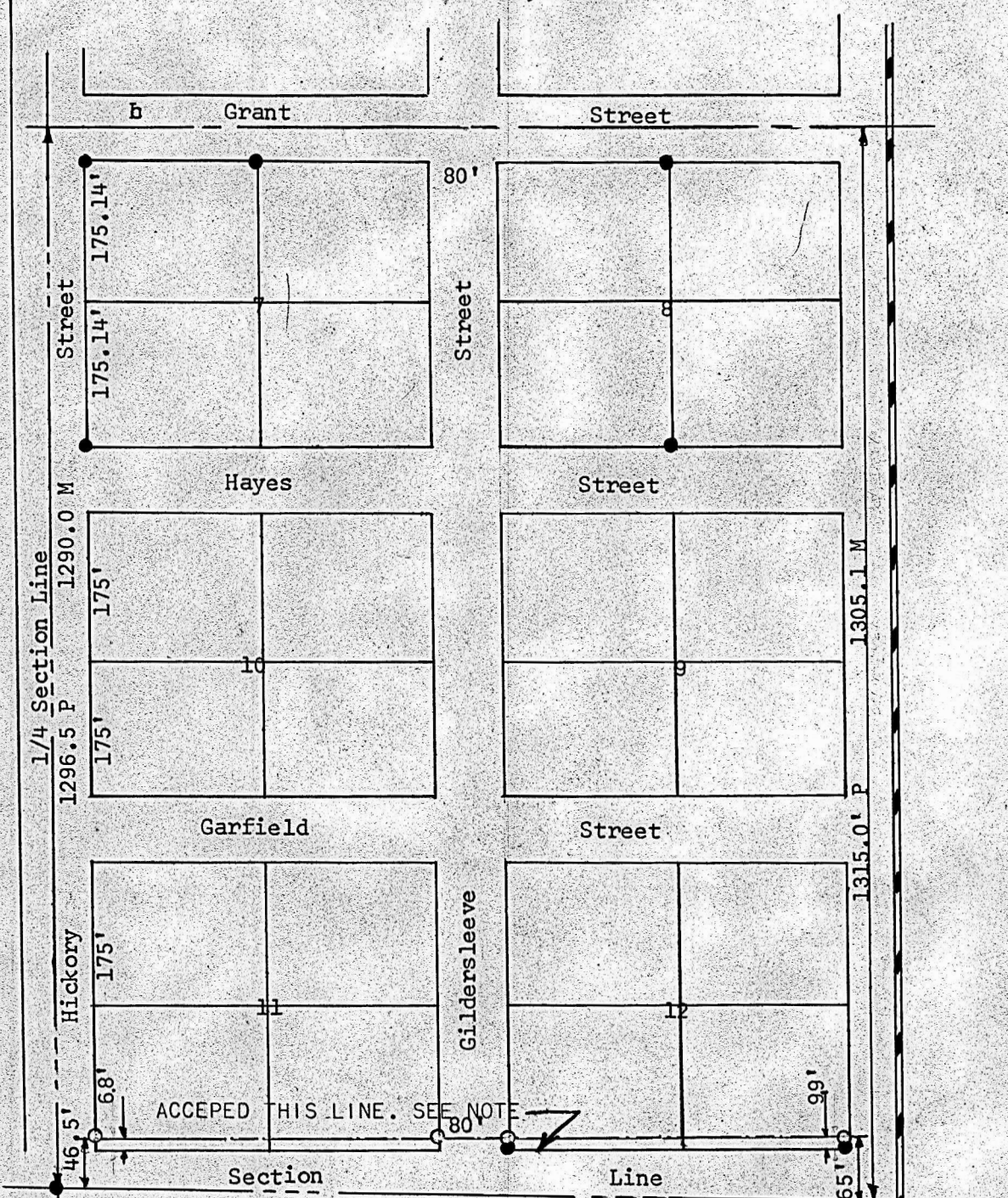


SOUTH LINE PARK ADDITION  
CITY OF MCPHERSON, KANSAS

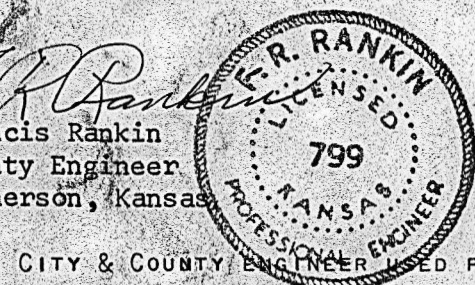


- South Line of Park Addition  
as shown North of Section Line  
on original plat
- Pins set This Survey
  - Pins Found This Survey

City of Kansas )  
City of McPherson) SS

Francis Rankin, County Engineer of McPherson County, Kansas, do here by certify that under my supervision a survey was made to determine the South Line of Park Addition as shown on original plat and the above is a true and correct copy of said survey as far as it is known to me.

Witnessed this 10 day August 1966



CITY & COUNTY ENGINEER USED PLATTED DISTANCE FROM GRANT STREET  
INSTEAD OF COMING PLATTED DISTANCE FROM SECTION LINE, WILL FOLLOW  
THIS PROCEDURE ON FUTURE SURVEYS