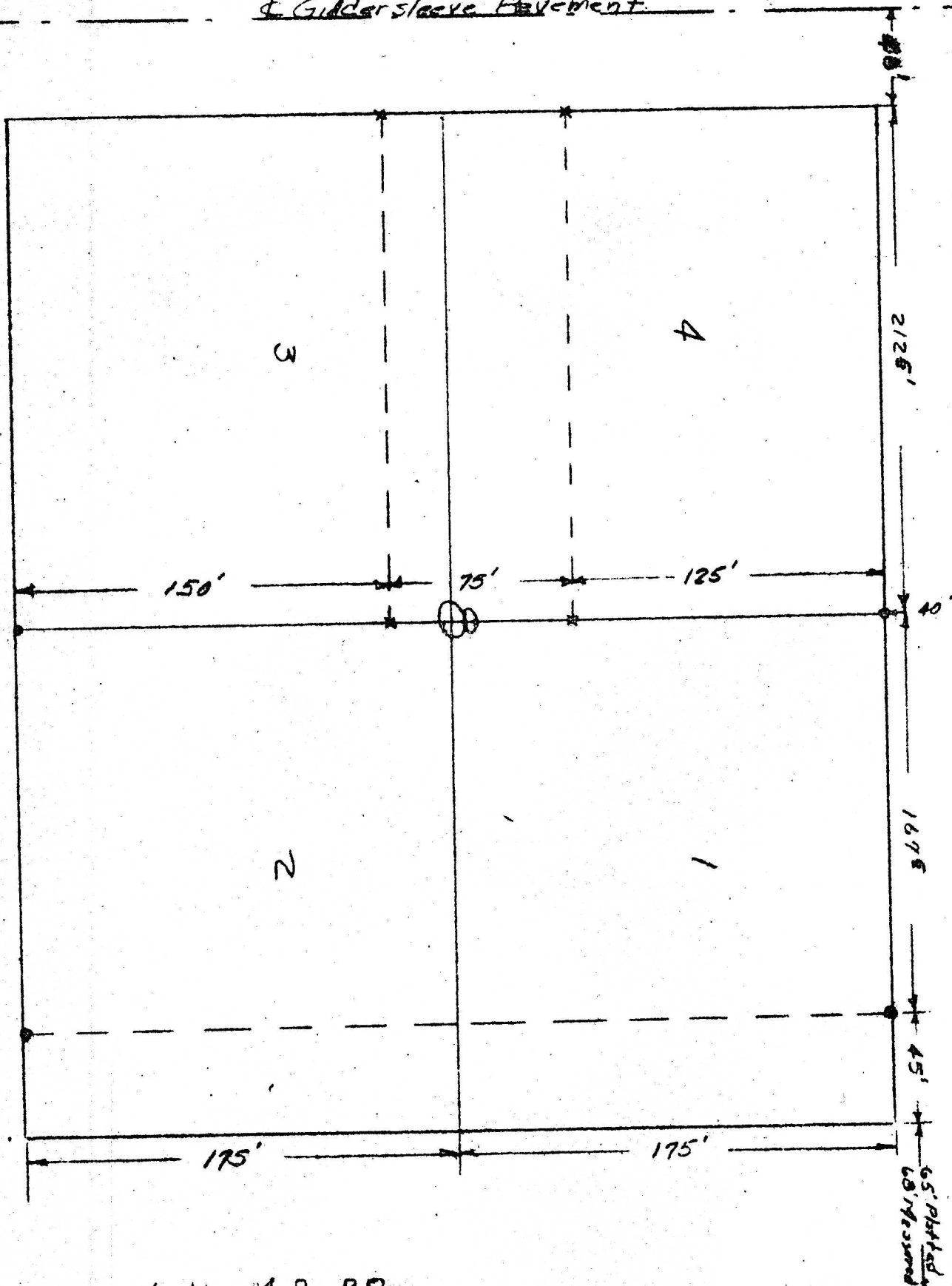


& Gutter/sleeve Pavement.



Main Line Mo. Pac. RR

o Pins Set this Survey
x Existing Pins

I, Walter S. Smith certify that on the 8th day of September 1954, I completed a survey on ~~the~~ the west 167.5' of Lots 1 & 2 Block 8 of Park Addition to the city of Moperson and that the above plat is a true exhibit of said survey.

Walter S. Smith
Licensed Professional Engineer

Note: Inasmuch as previous surveyors have used the center of street pavements to establish the property lines in this location, I have followed this procedure as a matter of policy.

Walter S. Smith
Walter S. Smith

MICROFILM