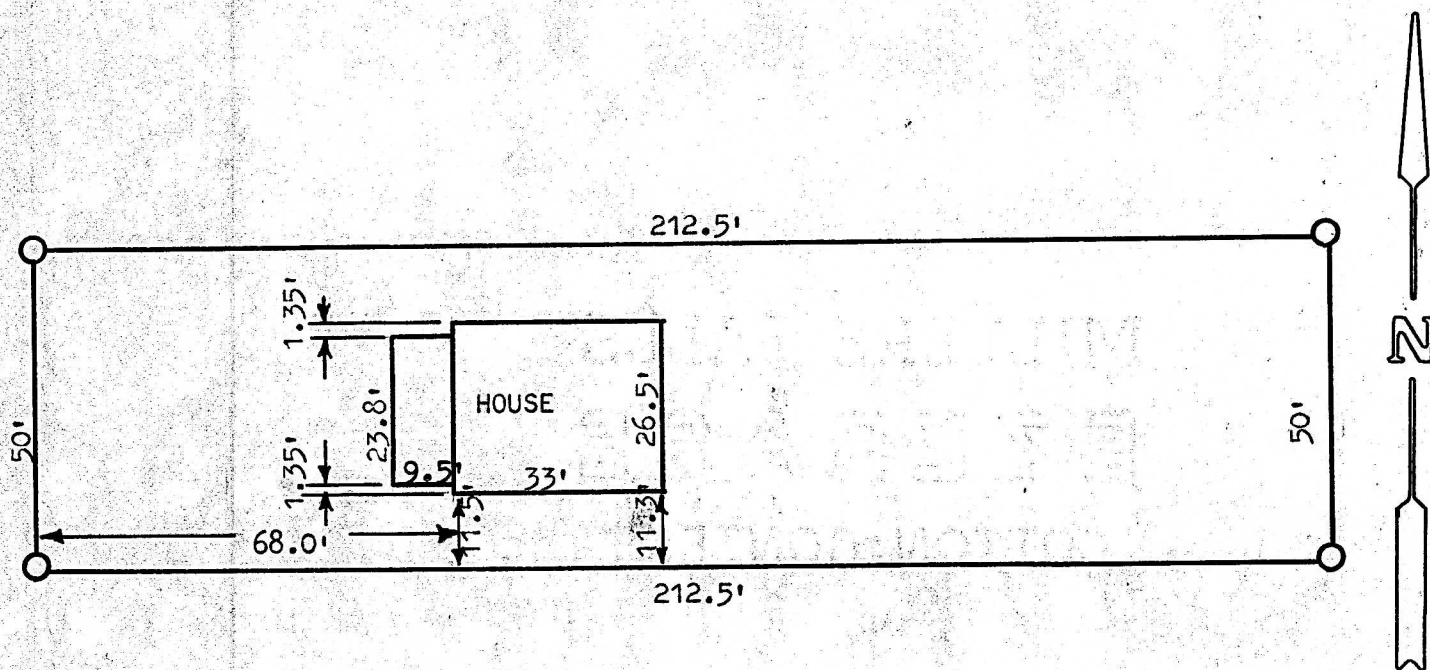


A SURVEY OF PART OF LOT 4, BLOCK 6  
PARK ADDITION, MCPHERSON, KANSAS



**O PINS SET THIS SURVEY**

STATE OF KANSAS )  
COUNTY OF MCPHERSON ) SS

I, FRANCIS RANKIN, COUNTY ENGINEER OF McPHERSON COUNTY, KANSAS,  
DO HEREBY CERTIFY THAT UNDER MY SUPERVISION A SURVEY WAS MADE OF THE  
SOUTH 50 FEET OF THE NORTH 120 FEET OF LOT 4, BLOCK 6, PARK ADDITION  
TO THE CITY OF McPHERSON, KANSAS, AND THAT THE ABOVE PLAT IS A TRUE  
EXHIBIT OF SAID SURVEY AS FAR AS IT IS KNOWN TO ME.

SURVEY CALLED FOR BY PERRIN AGENCY.

SIGNED THIS 27 DAY OF JUNE, 1973.

*Francis Rankin*  
FRANCIS RANKIN  
COUNTY ENGINEER  
McPHERSON COUNTY, KANSAS  
799  
KANSAS  
PROFESSIONAL ENGINEER