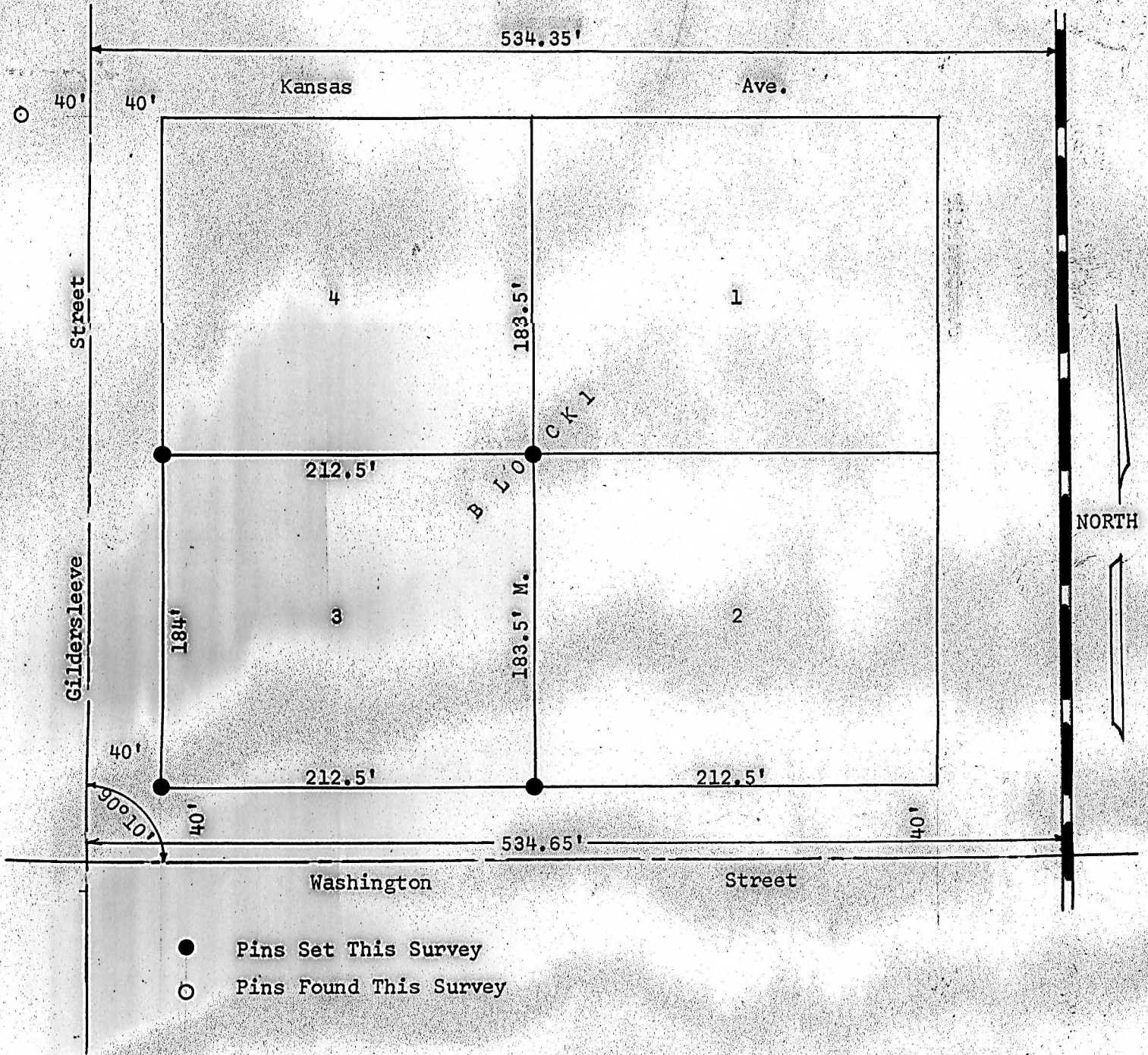


A SURVEY OF LOT 3
BLOCK 1 PARK ADDITION
MCPHERSON, KANSAS




State of Kansas) ss
County of McPherson)

I, Francis Rankin, County Engineer of McPherson County, Kansas, do hereby certify that I did cause to be done on the 21st day of January 1963, a survey of Lot 3, Block 1 of Park Addition to the City of McPherson, Kansas, and that the accompanying plat is a true exhibit of said survey as far as it is known to me.

Survey called for
21, January, 1963

Francis Rankin
County Engineer
McPherson County



A circular professional engineer seal for the State of Kansas. The outer ring contains the text "E. RANKIN" at the top and "PROFESSIONAL ENGINEER" at the bottom. Inside this is a smaller circle with the word "LICENSED" at the top and "KANSAS" at the bottom. In the center of the seal is the license number "799".