



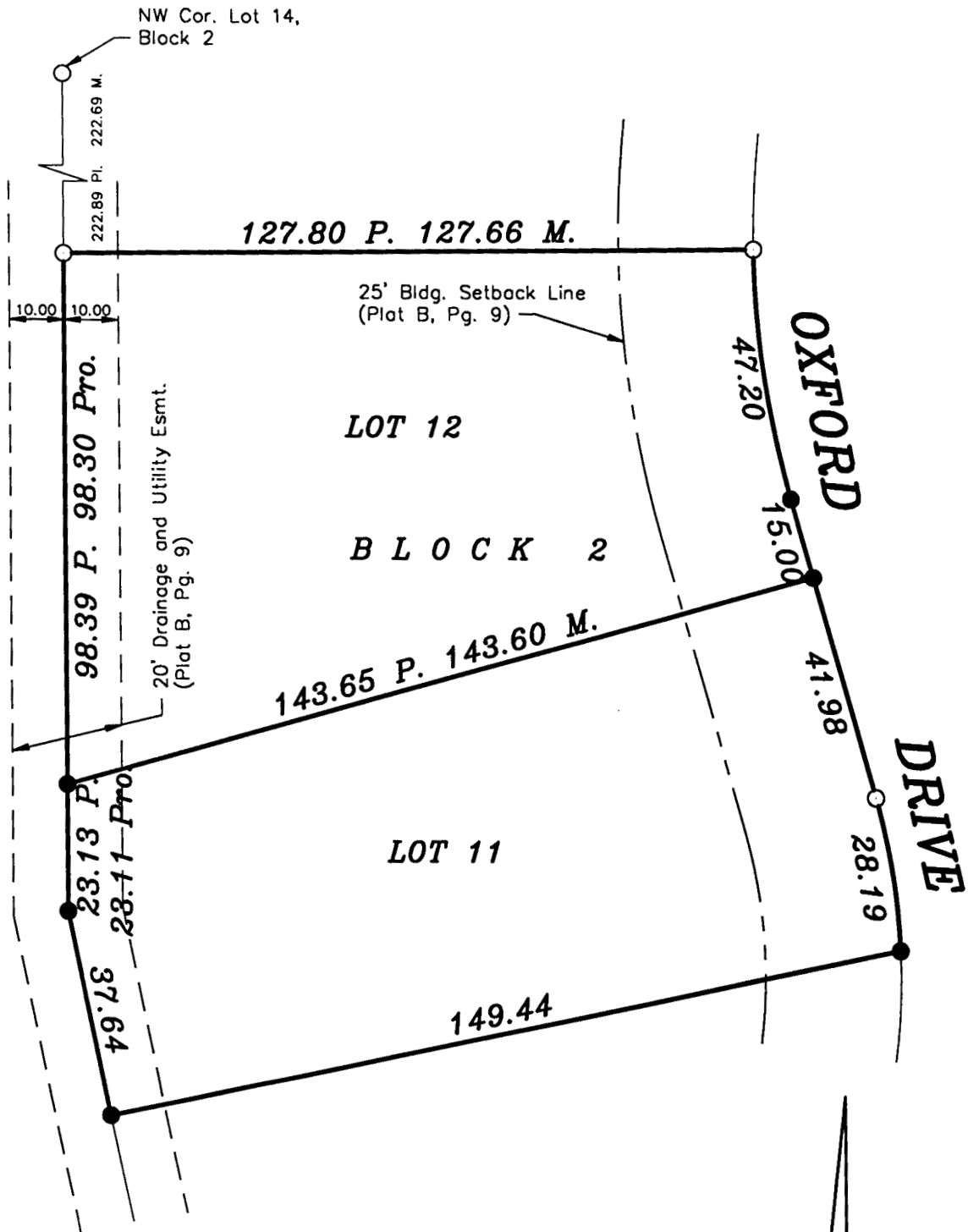
**Garber Surveying
Service, P.A.**

423 West 1st Ave. • Hutchinson, Kansas 67501
Phone 316 665-7032 • FAX 316 663-7401

Project No. G95-754

SURVEY FOR: RAILROAD SAVINGS BANK

DESCRIPTION: Lots 11 and 12, Block 2, Oxford Pointe Subdivision, McPherson, McPherson County, Kansas.



LEGEND

- O - Survey Monument Found
- - 5/8" x 24" Iron Rebar Set
- Pl. - Platted
- M. - Measured
- Pro. - Prorated



Scale: 1" = 30'

SURVEYOR'S CERTIFICATE:

I hereby certify this plat to be a true, correct and complete representation of the property described above as surveyed under my supervision.

Dated: July 31, 1995

Daniel E. Garber
Daniel E. Garber RLS #696
REGISTERED PROFESSIONAL SURVEYOR
LS 683
KANSAS