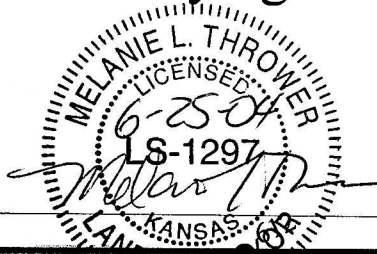


McPherson Engg. & Land Surveying Services

PO Box 662

McPherson, KS

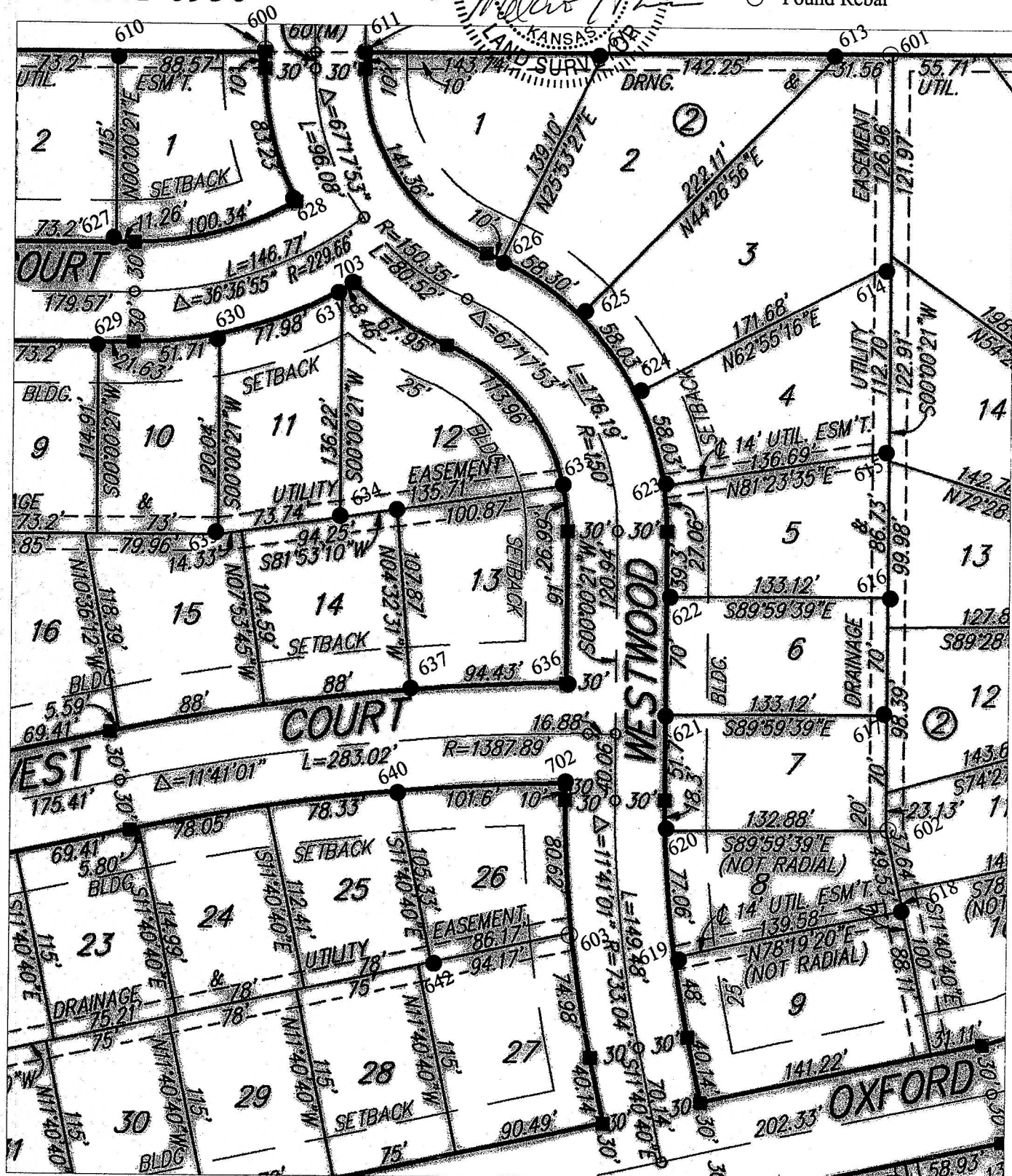
620-241-0950



OXFORD POINTE
SUBDIVISION

Not to scale

- Set Rebar
- Found Rebar



On June 25, 2004, Melanie L. Thrower set $\frac{1}{2}$ " x 2' rebar with surveyor ID caps at locations shown in accordance with plat.